

The Clean Water Partnership (CWP) is a Public-Private Partnership (P3) between Prince George's County and Corvias. The CWP is the first of its kind to design, build, finance, operate, and maintain urban stormwater infrastructure to meet Municipal Separate Storm Sewer System (MS4) regulatory requirements and is committed to retrofit up to 5,475 impervious acres.



Angela D. Alsobrooks
County Executive



Affix
stamp
here

Please visit TheCleanWaterPartnership.com to learn more about this innovative partnership.

If you have any questions please email Elsa.arias@thecleanwaterpartnership.com or call Elsa Arias (240) 583-7922.



Clean Water Partnership
9475 Lottsford Road, Suite 100
Largo, MD 20774

CLEAN WATER PARTNERSHIP OUTFALL 66 (SUNNYSIDE PARK) STREAM RESTORATION

CONSTRUCTION INFORMATION

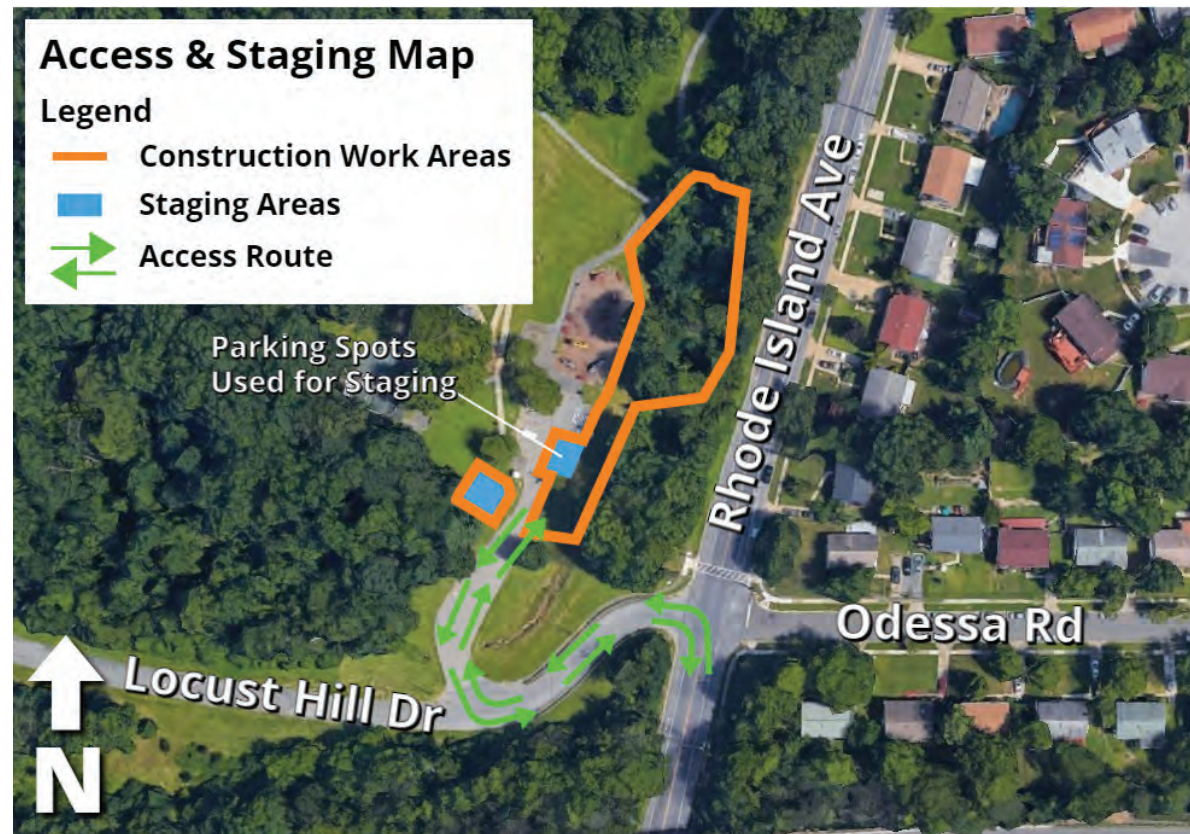


PRINCE GEORGE'S COUNTY, IN ALLIANCE WITH THE CLEAN WATER PARTNERSHIP (CWP), HAS BEEN WORKING ON THE PLANNING AND DESIGN OF A WATER QUALITY IMPROVEMENT PROJECT AT THE SUNNYSIDE PARK STREAM IN COLLEGE PARK, MARYLAND. CONSTRUCTION FOR THIS PROJECT IS SCHEDULED TO START IN LATE MAY 2023.

PROJECT DETAILS INFO:

This project will restore an unnamed tributary to Indian Creek (Reach 1) and generate nutrient and sediment reductions as part of the Prince George's County Clean Water Partnership.

This is a restoration project to improve the condition of the affected stream. Stream restoration is a best management practice (BPM) that stabilizes eroded streams, restores natural aquatic ecosystems, and improves water quality. To achieve a stable stream system this restoration plan was based on natural channel design principles, modified to fit the outfall application, and utilizes the installation of in-stream structures and channel grading to control elevation and flow patterns.



PROJECT NAME

Outfall 66 (Sunnyside Park) Stream Restoration

PROJECT ADDRESS

Sunnyside Park – 10110 Rhode Island Ave.
College Park, MD 20740

CONTRACTOR

RES

CONSTRUCTION START DATE

Late May 2023

CONSTRUCTION FINISH DATE

September 2023, weather permitting

CONSTRUCTION HOURS (typical):

Monday – Friday: 7 AM – 5 PM
Saturday (as needed): 9 AM – 4 PM

SITE ACCESS INFO

Crew members will access the site using the existing driveway at the intersection of Rhode Island Ave., and Locust Hill Dr.

Equipment will be staged within the maintenance work areas. Construction vehicles will park inside the limits of disturbance (LOD).

The LOD is the boundary within which all construction storage, grading, landscaping and related activities will occur.

See the following map for details.

TREE REMOVAL

Construction crews will remove several trees to make room for the stream restoration and will plant new trees at the end of construction to replace removed trees. Additionally, invasive vegetation will be replaced with native plants and shrubs.