



Project Overview

Affix
stamp
here

The Clean Water Partnership (CWP) is a Public-Private Partnership (P3) between Prince George's County and Corvias. The CWP is the first of its kind to design, build, finance, operate, and maintain urban stormwater infrastructure to meet Municipal Separate Storm Sewer System (MS4) regulatory requirements and is committed to retrofit up to 5,475 impervious acres.

Please visit TheCleanWaterPartnership.com to learn more about this innovative partnership.



Angela D. Alsobrooks
County Executive

Corvias®

If you have any questions please email
Elsa.Arias@thecleanwaterpartnership.com
or call Elsa Arias at (240) 583-7922.



Clean Water Partnership
9475 Lottsford Road, Suite 100
Largo, MD 20774

BLACK BRANCH STREAM RESTORATION

CONSTRUCTION INFORMATION

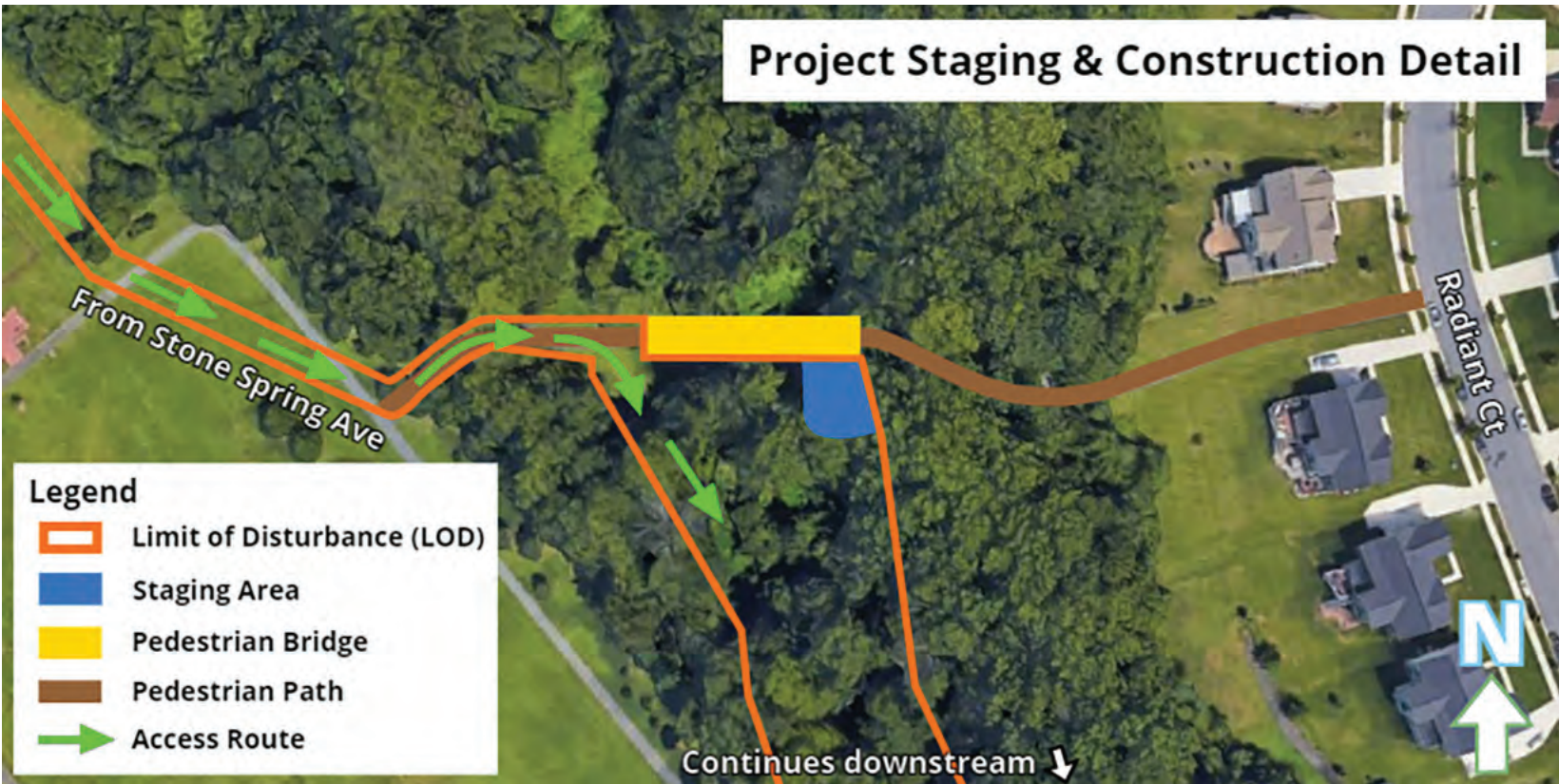


PRINCE GEORGE’S COUNTY, IN ALLIANCE WITH THE CLEAN WATER PARTNERSHIP (CWP), HAS BEEN WORKING ON THE PLANNING AND DESIGN OF A WATER QUALITY IMPROVEMENT PROJECT AT BLACK BRANCH STREAM IN UPPER MARLBORO, MARYLAND. CONSTRUCTION FOR THIS PROJECT IS SCHEDULED TO START IN THE SUMMER OF 2021.

PROJECT DETAILS: This is a restoration project to improve the condition of the affected steam. Stream restoration is a best management practice (BMP) that stabilizes eroded streams, restores natural aquatic ecosystems, and improves water quality.

The project includes installing several stream structures, including rock cross vane, riffle pool, and large pool designs, to enable natural control of stream erosion and water flow.

See the overview maps for additional details. After construction is complete, all disturbed areas will be returned to stable conditions.



PROJECT NAME: Black Branch Stream Restoration

PROJECT ADDRESS: Near 13321 Mary Bowie Pkwy., Upper Marlboro, MD 20774

CONTRACTOR: SMC

CONSTRUCTION START DATE: Summer 2021

CONSTRUCTION FINISH DATE: Spring 2022, weather permitting

CONSTRUCTION HOURS (typical):

Monday – Friday: 7 AM – 4 PM

Saturdays (as needed) 9 AM – 5 PM

SITE ACCESS: There will be several trucks EACH WEEK delivering materials to the site through public access roads. Construction crews will access the stream via Stone Spring Avenue. At times trucks will queue up along Stone Spring Avenue. Care will be taken to minimize congestion within the community.

CONSTRUCTION PARKING: Construction crews will stage equipment and park crew member vehicles on-site within the Limit of Disturbance (LOD). The LOD is the boundary within which all construction, materials storage, grading, landscaping, and related activities will occur.

PEDESTRIAN ACCESS: The pedestrian path within the LOD is anticipated to remain open during construction. The dog park and community garden will also remain accessible. The existing fence on the northern front corner of the dog park will be temporarily relocated for the duration of construction and restored once construction is complete. Please proceed with caution when construction vehicles and equipment are traveling on the access road leading to the construction site. Efforts will be made to minimize the impact for park users on these areas.

TREE REMOVAL: Efforts will be made to minimize tree removal and preserve large trees where possible. Some trees are being removed by the contractors, as needed, to establish access and make room for construction.