



Angela D. Alsobrooks
County Executive



PRINCE GEORGE'S COUNTY COUNCIL SESSION CLEAN WATER PARTNERSHIP FY20 OVERVIEW



The Clean Water Partnership

- A 30-year partnership between Prince George's County, Maryland and Corvias to identify, design, build, operate and maintain stormwater assets.



- Based on the Community-Based Public Private Partnership (CBP3) model as developed by the USEPA Region III.
- Intentionally developed to provide multiple, overlaying benefits (socioeconomic, environmental, implementation efficiency, local uplift, compliance surety).

Stormwater can be an impactful infrastructure program that achieves broader County policy goals and objectives:

- Achievement of greater cost savings, innovation, efficiencies and economic development output are possible across County infrastructure programs
- More effective utilization of a partnership – treating it less like an environmental contractor and more like a partner in its overall infrastructure strategy
- Can increase efficiencies and contractor utilization opportunities by **NOT** duplicating efforts across CIP, DPWT & CWP, leveraging the established subcontractor capacity & workforce development programs across all of them
- Improvements to the funding strategy that reduces pricing and allows for flexibility in procurement that creates opportunities for SWMBE firms to grow

Performance Based Results:

- **167** projects completed across nine County Council districts to date
- **4,043** acres retrofitted for MS4/TMDL permit compliance
- Local Economic Impact
 - 79% (\$151M) Total Expenditures to Target Class Businesses
 - 51% County Resident Work Hours
- Community Impact
 - 103 projects completed on faith-based retrofits through the alternative compliance program (ACP), school projects through the partnership with Prince George's County Public Schools, and on municipal property throughout the County
 - Over \$1M invested in community partnerships inclusive of youth and environmental literacy programs, 39 Mentor Protégé Program participants and paid internships for over 100 Prince George's County students
 - Greening and beautifying our landscape planting 435 trees and 14,360 shrubs; and improving our local rivers and streams by removing over 30 million pounds of sediment and over a hundred tons of trash and debris

CONTRACTOR DEVELOPMENT IN DISTRICT 1

Cumulative Investments – District 1

District 1 Total Project
Construction Costs

\$30,730,738



Companies Located in District 1

CWP Primes

Company	Role
Nardi Construction, Inc.	Construction

Mentor Protégé Firms

Company	Services
Actaeon, LLC	Construction; Site work
Celsue Construction Services, Inc.	Construction; Paving
Le Blue Associates	Construction

CWP Contractors

Company	Role
Assedo Consulting	Outreach
Bulldog Distribution	Construction
Capitol Development Design, Inc.	Surveying; Engineering
EBA Engineering	Design
Geotech Engineers, Inc.	Geotechnical
Kim Engineering	Engineering
Low Impact Development Center, Inc.	Design; Engineering; Outreach
Mid-Atlantic	Construction; Paving
Rapp	Construction
Video Pipe Service	Technology

CONTRACTOR DEVELOPMENT IN DISTRICT 1

Number of Companies

Engaged: 109



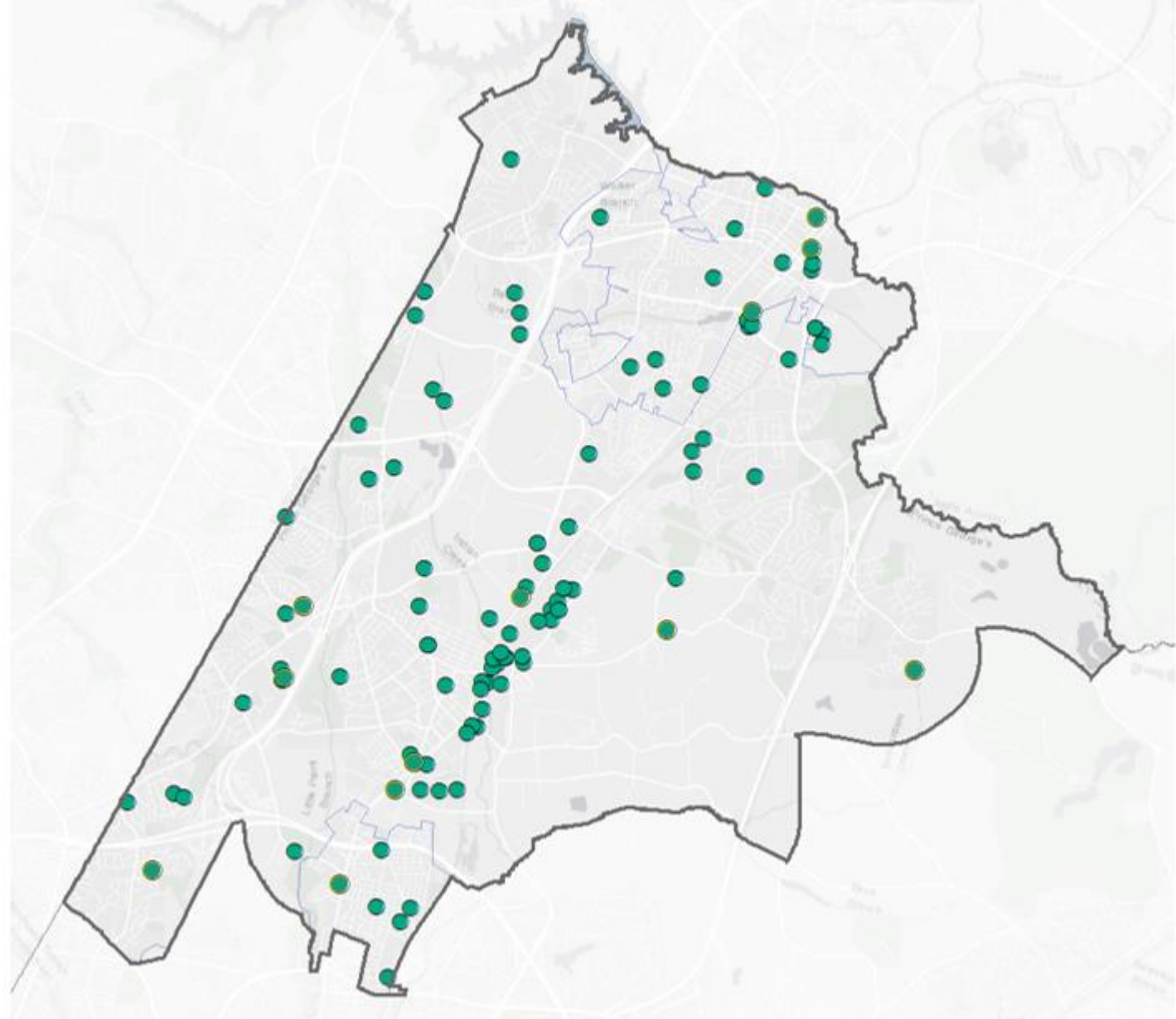
Discipline	No. Companies
Business Services	9
Concrete	14
Concrete; Paving	2
Construction	26
Construction; Paving	2
Distributor/Supplier	1
Engineering	10
Environmental Consultant	2

Discipline	No. Companies
Landscaping	28
Other	5
Paving	2
Surveying	1
Surveying; Engineering	1
Technology	3
Trucking	2
Architecture/Engineering	1

CONTRACTOR DEVELOPMENT DISTRICT 1

● Businesses Engaged
over Time

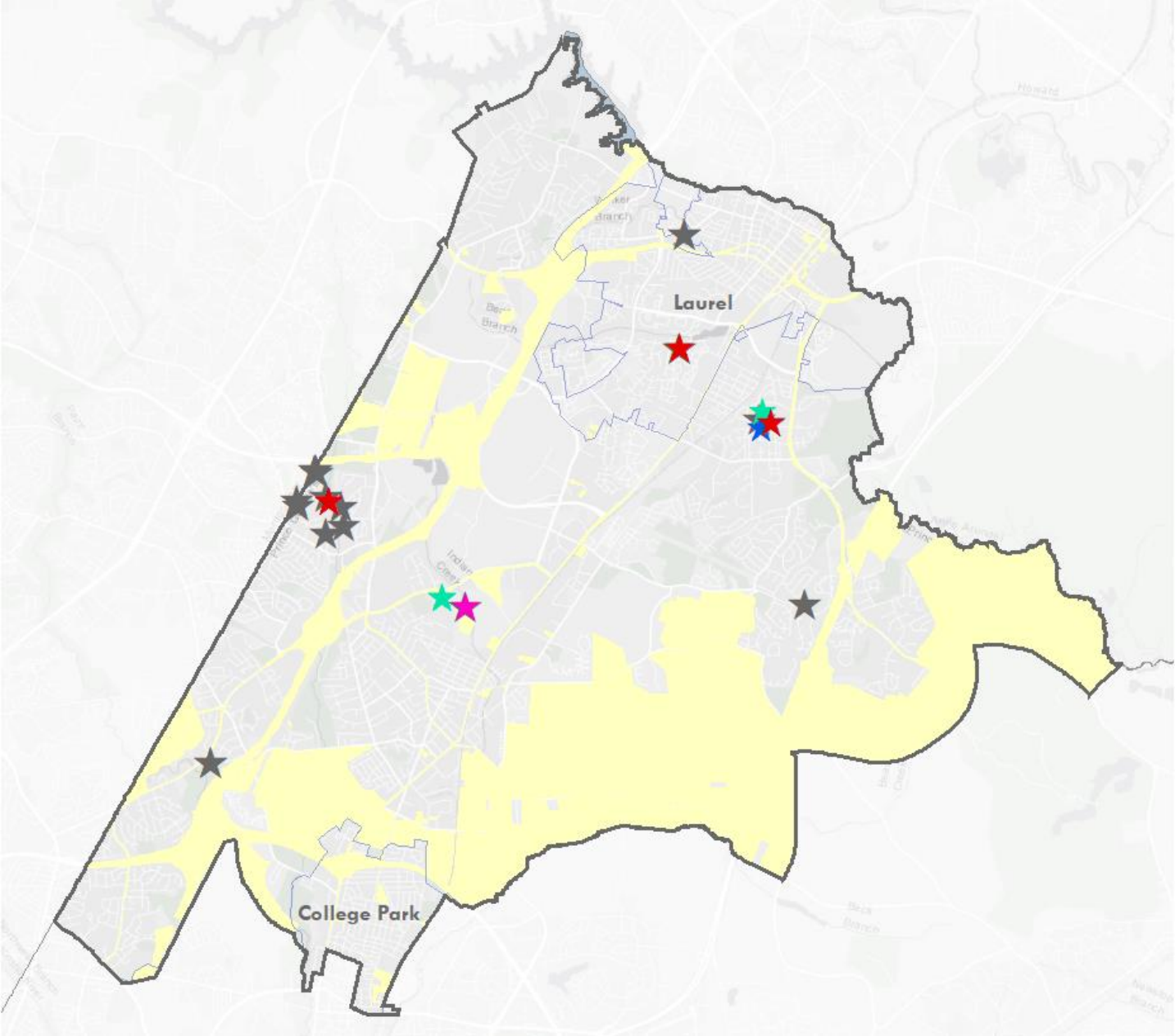
□ Municipal Boundary



COMMUNITY OUTREACH EFFORTS IN 2020

DISTRICT 1

- ★ Community Meeting/Event (3)
- ★ One-on-one Meeting (2)
- ★ Outreach Materials Distribution (5)
- ★ Project Groundbreaking Event (1)
- ★ General Outreach (7)
- ★ 2019 Event (18)
- Municipal Boundary
- Non-County MS4 Regulated Area



COMMUNITY ENGAGEMENT DISTRICT 1



Martin Luther King Middle School




Oaklands Stream Restoration




Eisenhower MS Virtual Maintenance Transfer


CWP SCHOOLS PROGRAM DISTRICT 1



CWP School

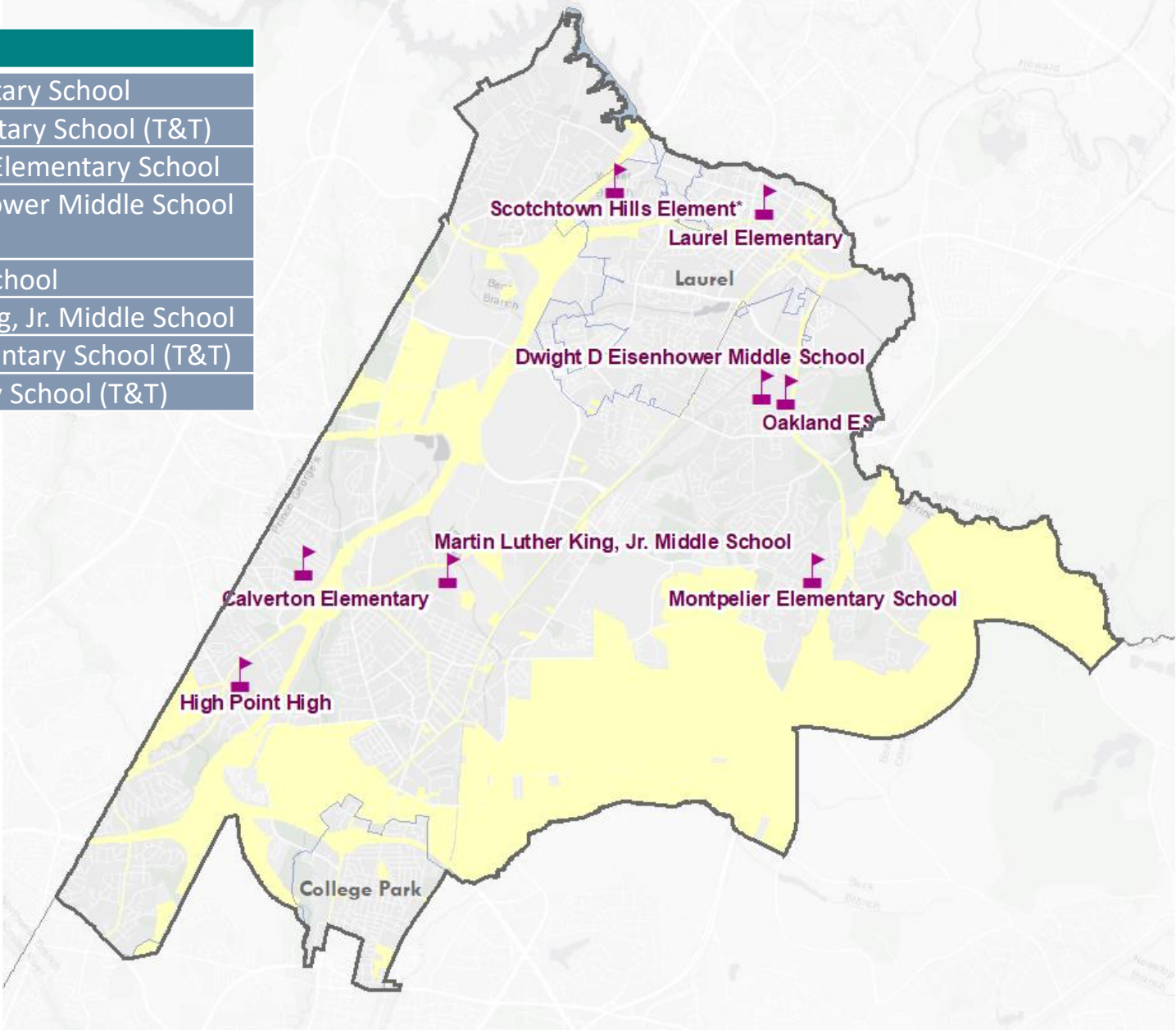


Municipal
Boundary



Non-County MS4
Regulated Area

Schools
Oaklands Elementary School
Calverton Elementary School (T&T)
Scotchtown Hills Elementary School
Dwight D. Eisenhower Middle School (T&T)
High Point High School
Martin Luther King, Jr. Middle School
Montpelier Elementary School (T&T)
Laurel Elementary School (T&T)



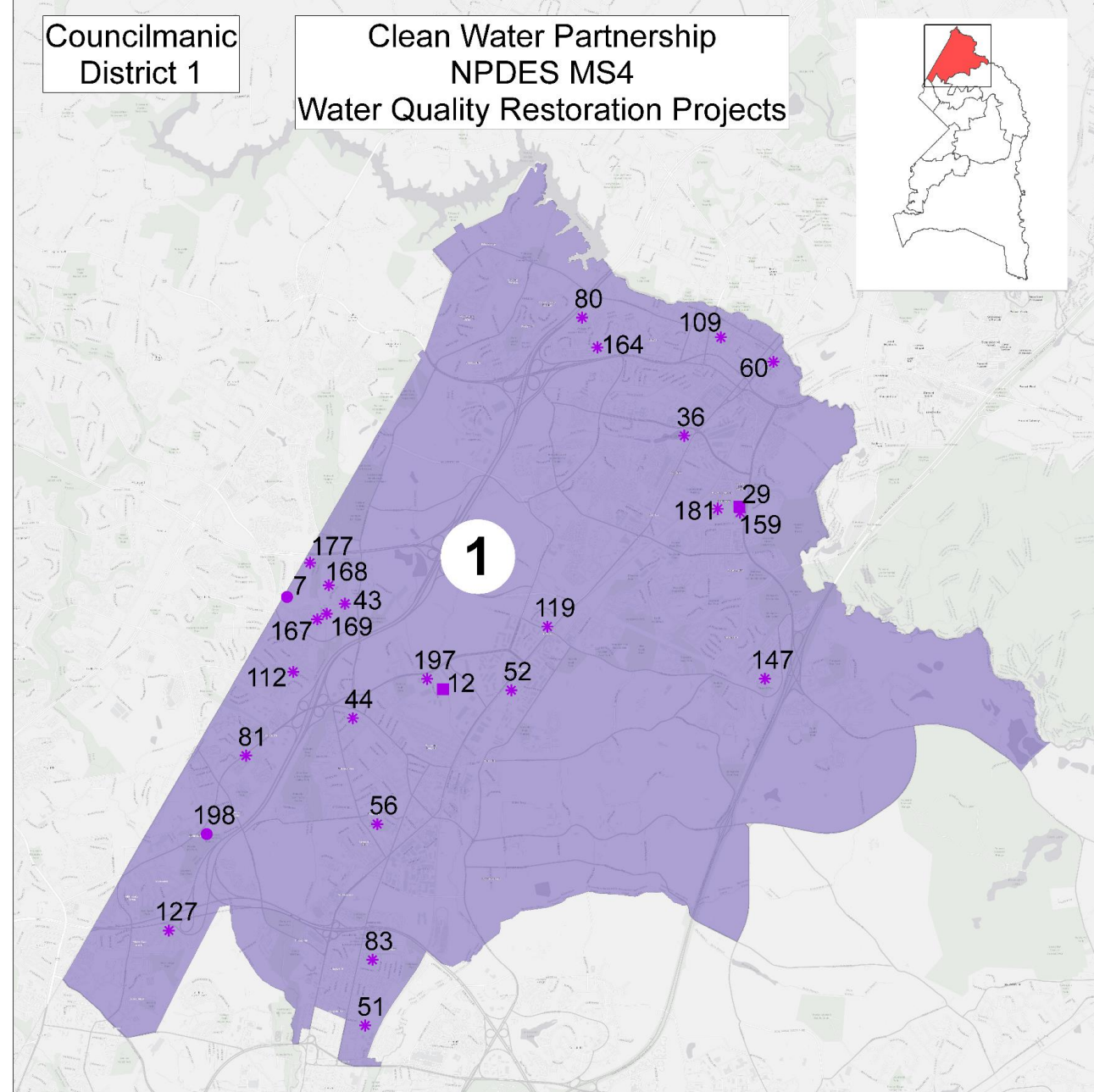
Note: T&T = Treating & Teaching Program Participant



CWP PROJECTS IN DISTRICT 1

Project Name	Map ID	Project Name	Map ID
151 1st Street	60	Montpelier ES	147
5901 Ammendale Road	12	Muirkirk Industrial Park	52
Beltsville Branch Library	56	Narragansett Parkway	83
Birmingham Estates	44	Oakland ES	159
Calverton Elementary	112	Oakland Stream	
College Park Muni Yard	51	Restoration	29
Cross Creek Pond #1	167	Paint Branch Unitarian	
Cross Creek Pond #13	43	Universalist Church	198
Cross Creek Pond #15	168	Scotchtown Hills ES	80
Cross Creek Pond #18	169	White Oak Manor	127
Cross Creek Pond #7	7		
Cross Creek Pond 6	177		
Dwight D Eisenhower MS	181		
High Point High	81		
Konterra Business Park	119		
Laurel ES	109		
Laurel Lakes	36		
Martin Luther King, Jr. MS	197		
Millbrook	164		

- Design
- ▲ Planning
- * Completed
- Construction



CONTRACTOR DEVELOPMENT IN DISTRICT 2

Cumulative Investments – District 2

District 2 Total Awards	\$1,587,593
-------------------------	-------------



Companies Located in District 2

Mentor Protégé Firms

Company	Services
AED	Design; Engineering
DAD Environmental Construction	Construction; Maintenance
JJ Prime	Construction

CWP Contractors

Company	Role
Denchfield Landscaping Nursery	Landscaping

CONTRACTOR DEVELOPMENT IN DISTRICT 2

Number of Companies

Engaged: 39

Discipline	No. Companies
Architecture/Engineering	1
Concrete	1
Construction	3
Distributor/Supplier	1
Economic Development	1
Landscaping	23
Paving	1



"We would not have known what we didn't know. The CWP's Mentoring Program has been an amazing experience...a master class. Thank you for your commitment to us."

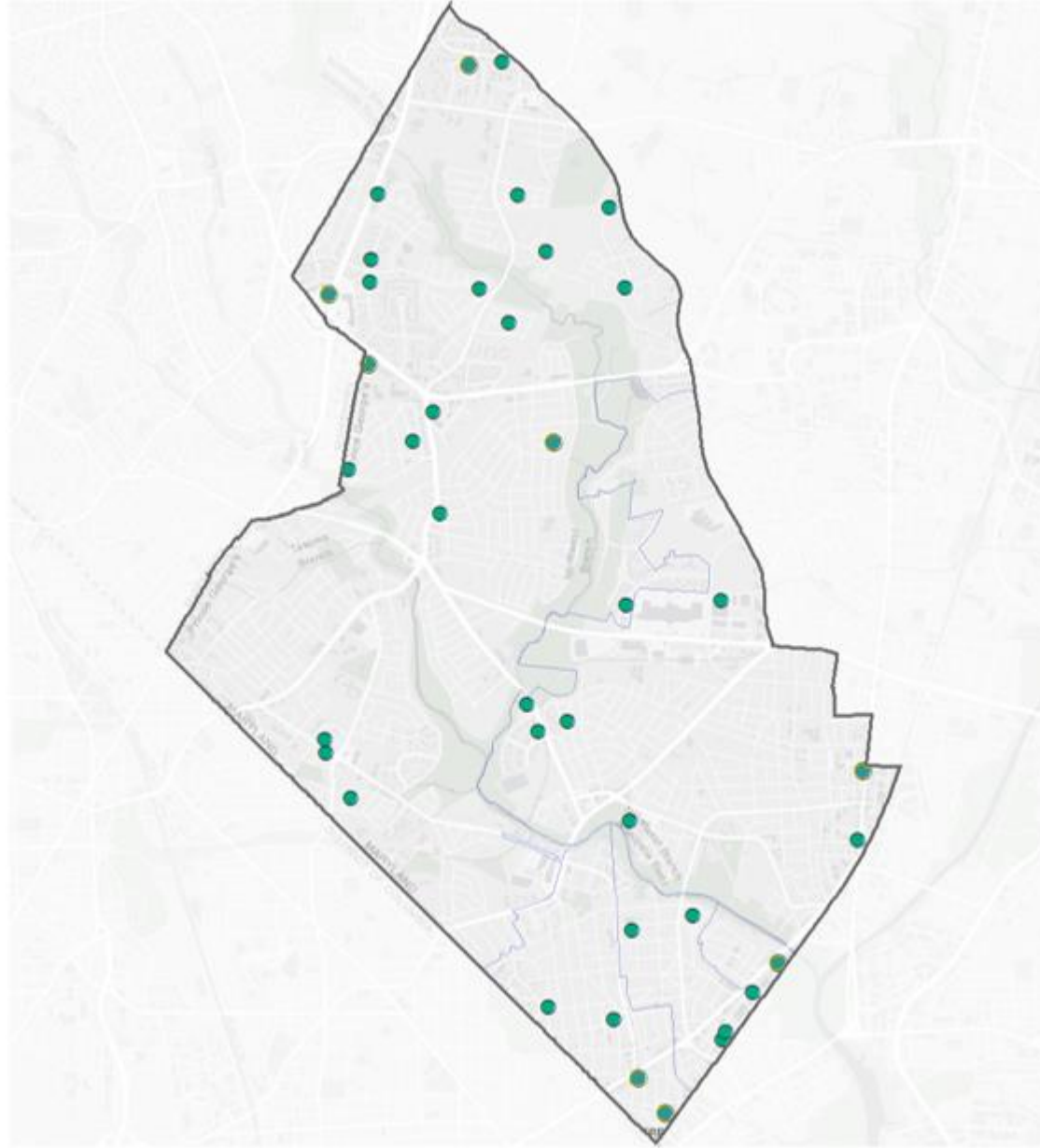
Donna Wilson, President & Founder MESS shares her experience following the completion of the CWP Cohort 4 MPP/ELP Training.

Discipline	No. Companies
Paving/Concrete	2
Printing	1
Supplier	1
Surveying	1
Technology	1
Trucking	1
Workforce Organization	1

CONTRACTOR DEVELOPMENT DISTRICT 2

● Businesses Engaged
over Time

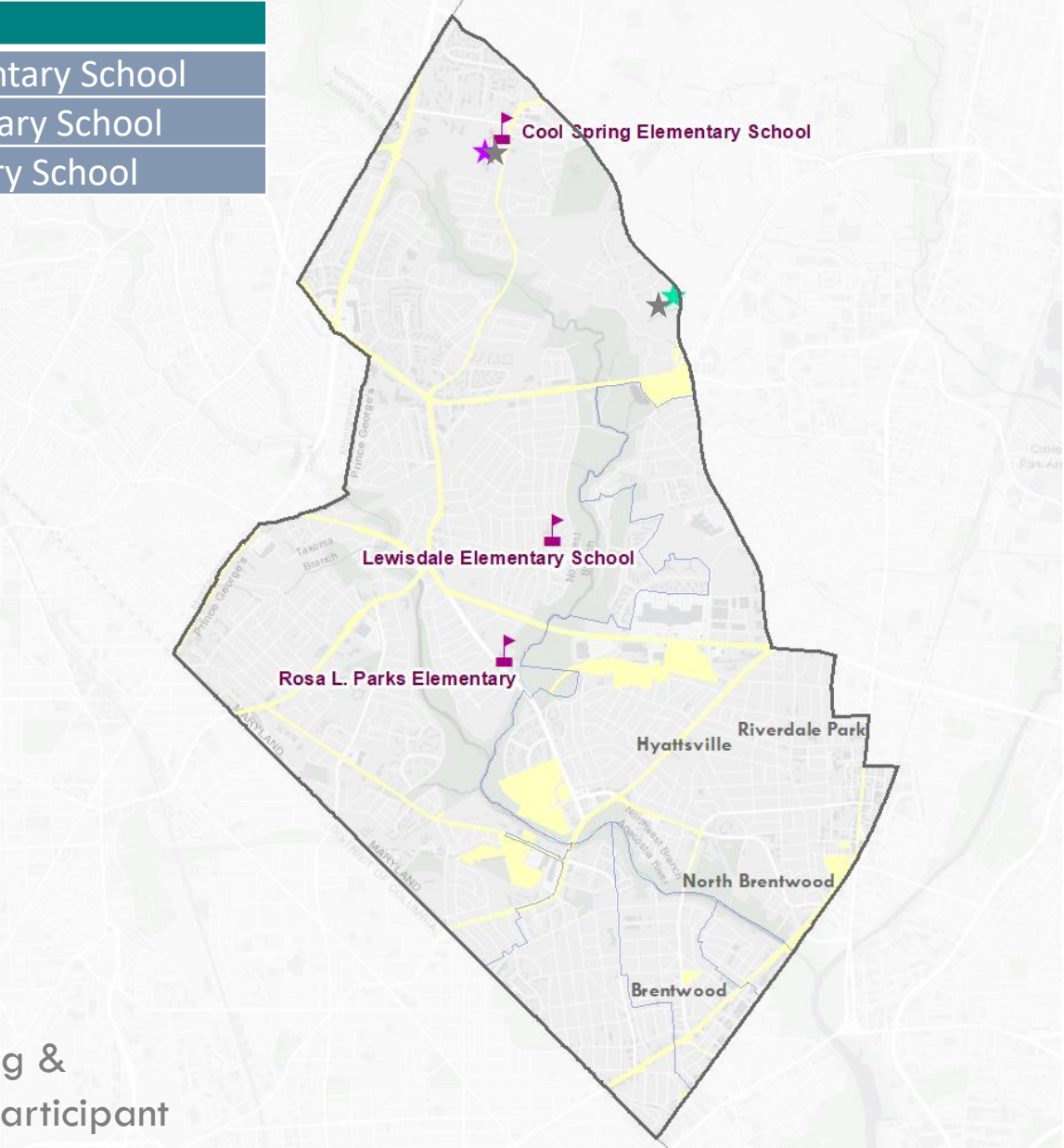
□ Municipal Boundary



COMMUNITY OUTREACH AND CWP SCHOOLS IN DISTRICT 2

- ★ Training Session (1)
- ★ Other (2)
- ★ 2019 Event (9)
- 🚩 CWP School
- ▭ Municipal Boundary
- ▭ Non-County MS4 Regulated Area

Schools
Rosa L. Parks Elementary School
Cool Spring Elementary School
Lewisdale Elementary School



Note: T&T = Treating & Teaching Program Participant

COMMUNITY ENGAGEMENT DISTRICT 2



Cool Springs Elementary School



Storm Drain



Interpretive Sign

CWP PROJECTS IN DISTRICT 2

Project Name	Map ID
Christian Science Church	196
Cool Spring Elementary School	151
Lewisdale Elementary School	136
Magruder Park	77
Nine Pond	195
Rosa L. Parks Elementary	85

●

Design

▲

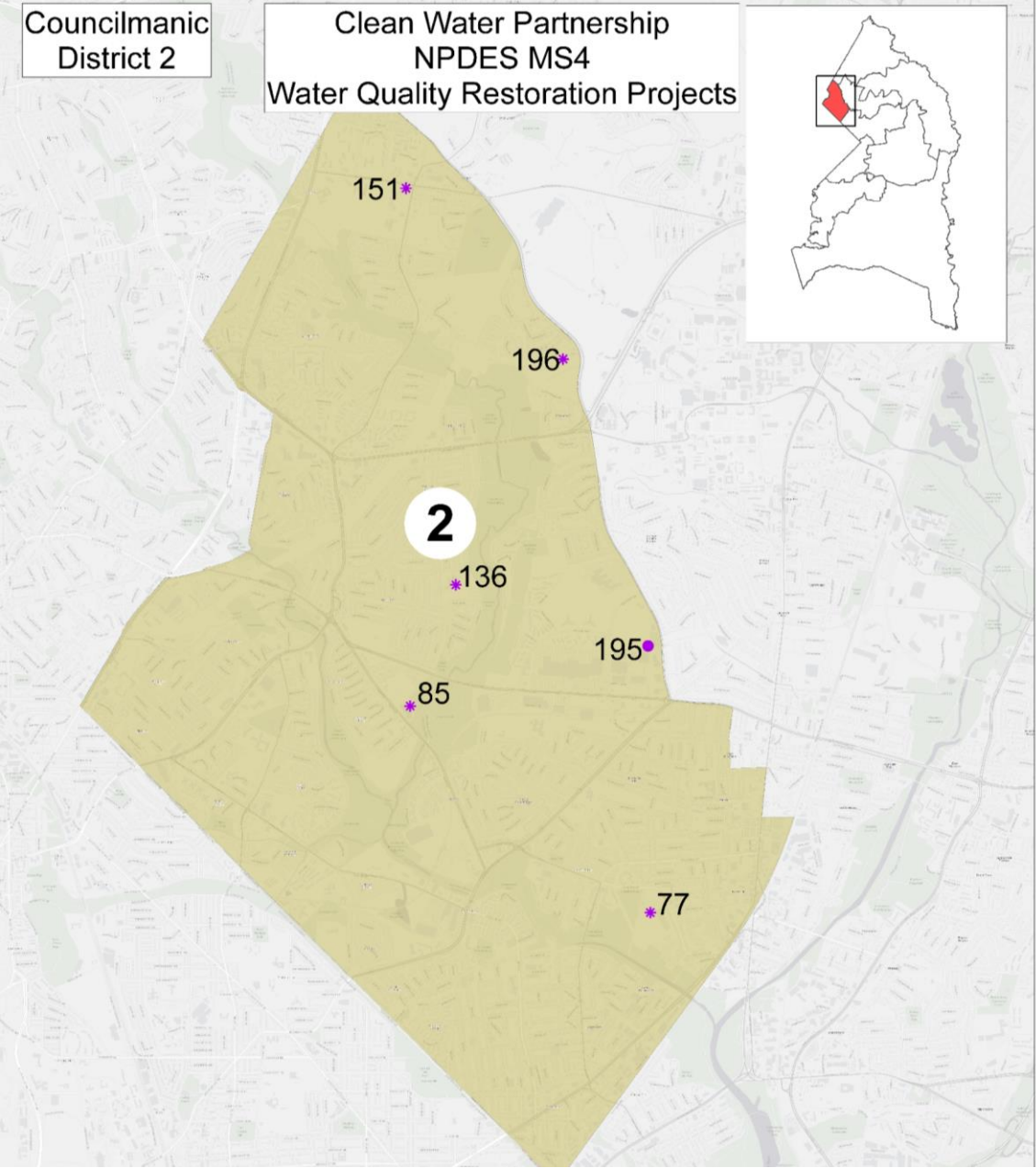
Planning

✱

Completed

■

Construction



CONTRACTOR DEVELOPMENT IN DISTRICT 3

Cumulative Investments – District 3

District 3 Total Project
Construction Costs

\$5,649,244



Companies Located in District 3

CWP Primes

Company	Role
CPJ & Associates	Design
Soltesz	Design; Engineering
Total Civil Construction	Construction; General Contractor

Mentor Protégé Firms

Company	Services
Bota Engineering	Geotechnical Services
Estimé Enterprises	Construction
JJ Prime	Construction

CWP Contractors

Company	Role
Brightwater	Design; Engineer
End Times Harvest Ministries	Youth Services & Employment

CONTRACTOR DEVELOPMENT IN DISTRICT 3

Number of Companies

Engaged: 110

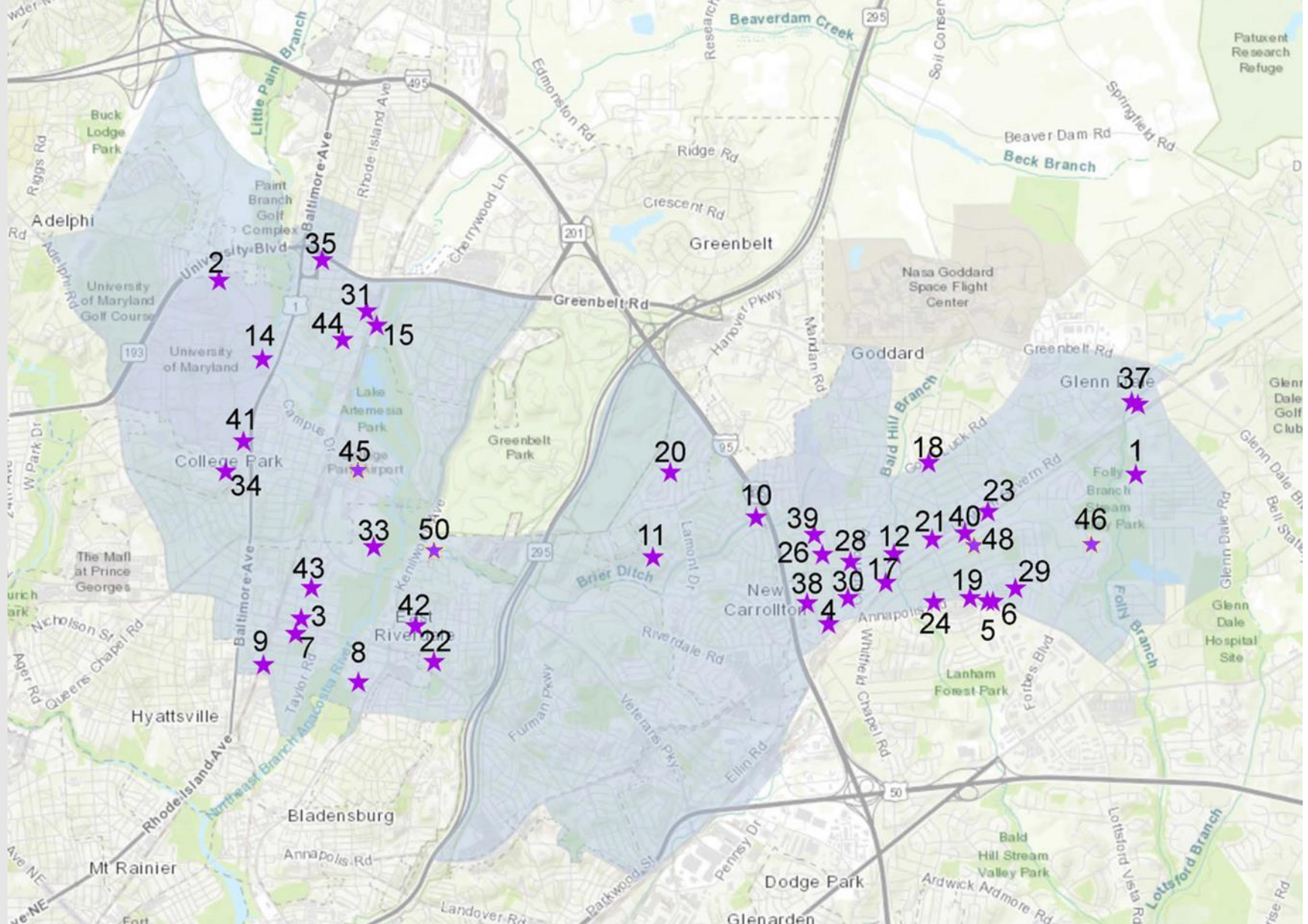
Discipline	No. Companies
Business Services	5
Concrete	7
Concrete/Site work	1
Construction	16
Distributor/Supplier	1
Engineering	4
Landscaping	22



Discipline	No. Companies
Other	2
Paving	1
Technology	2
Trucking	3
Workforce Organization	1

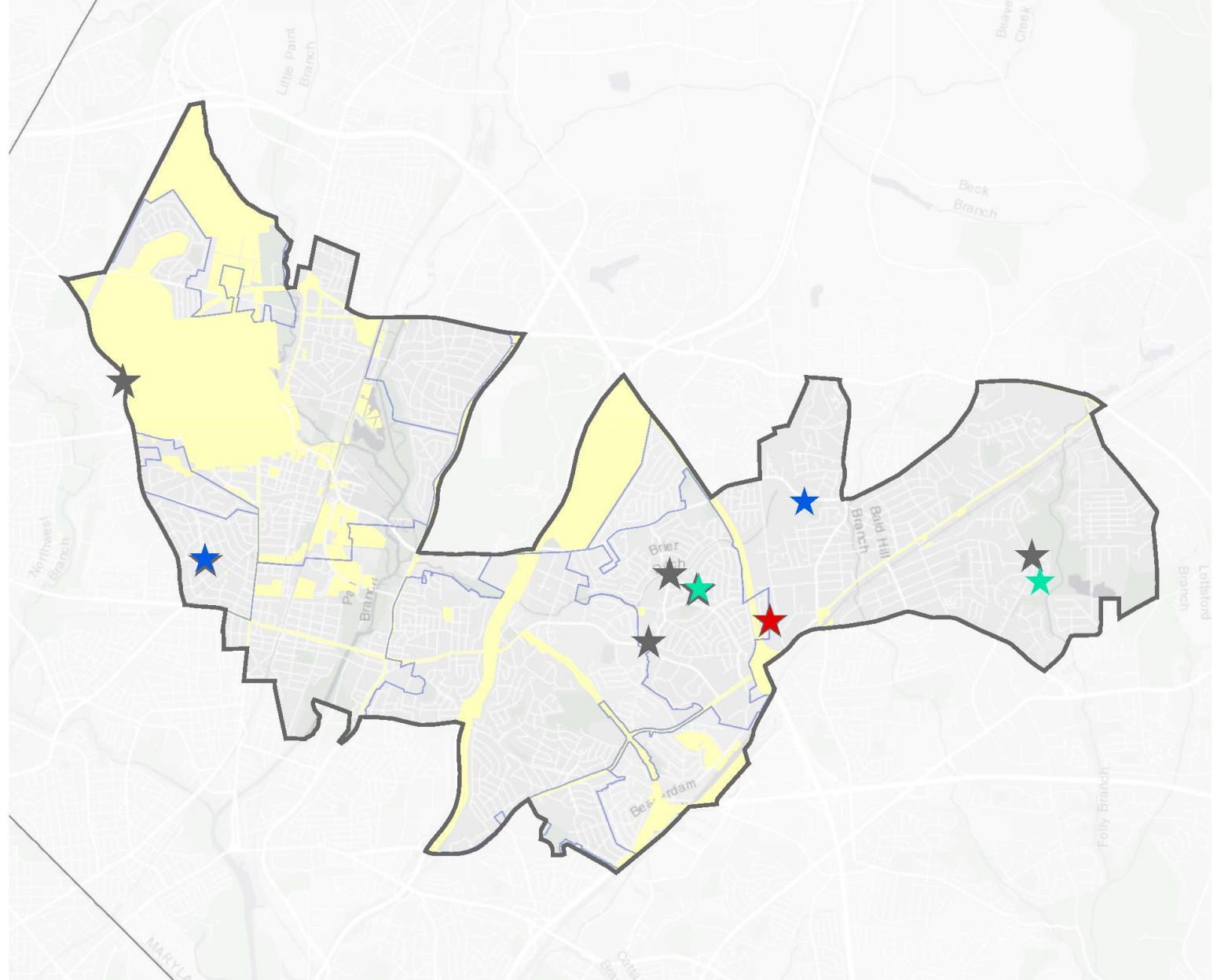
CONTRACTOR DEVELOPMENT DISTRICT 3

- ★ Businesses Engaged over Time
- Councilmanic district

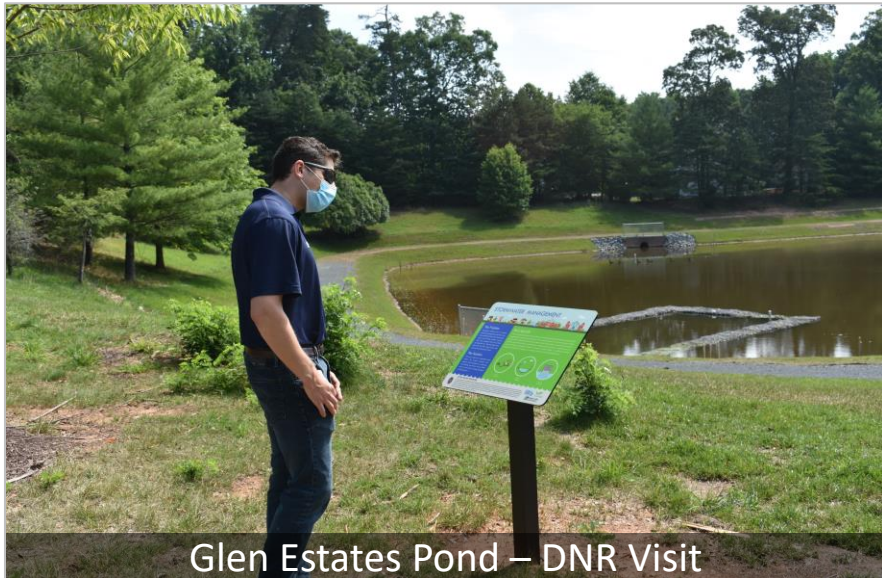


COMMUNITY OUTREACH EFFORTS IN 2020 DISTRICT 3

- ★ Community Meeting/Event (5)
- ★ One-on-one Meeting (2)
- ★ Outreach Materials Distribution (8)
- ★ Project Groundbreaking Event (1)
- ★ General Outreach (7)
- ★ 2019 Event (8)
- Municipal Boundary
- Non-County MS4 Regulated Area



COMMUNITY ENGAGEMENT DISTRICT 3



Glen Estates Pond – DNR Visit


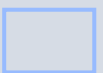



Carrolton ES – Virtual Maintenance Transfer

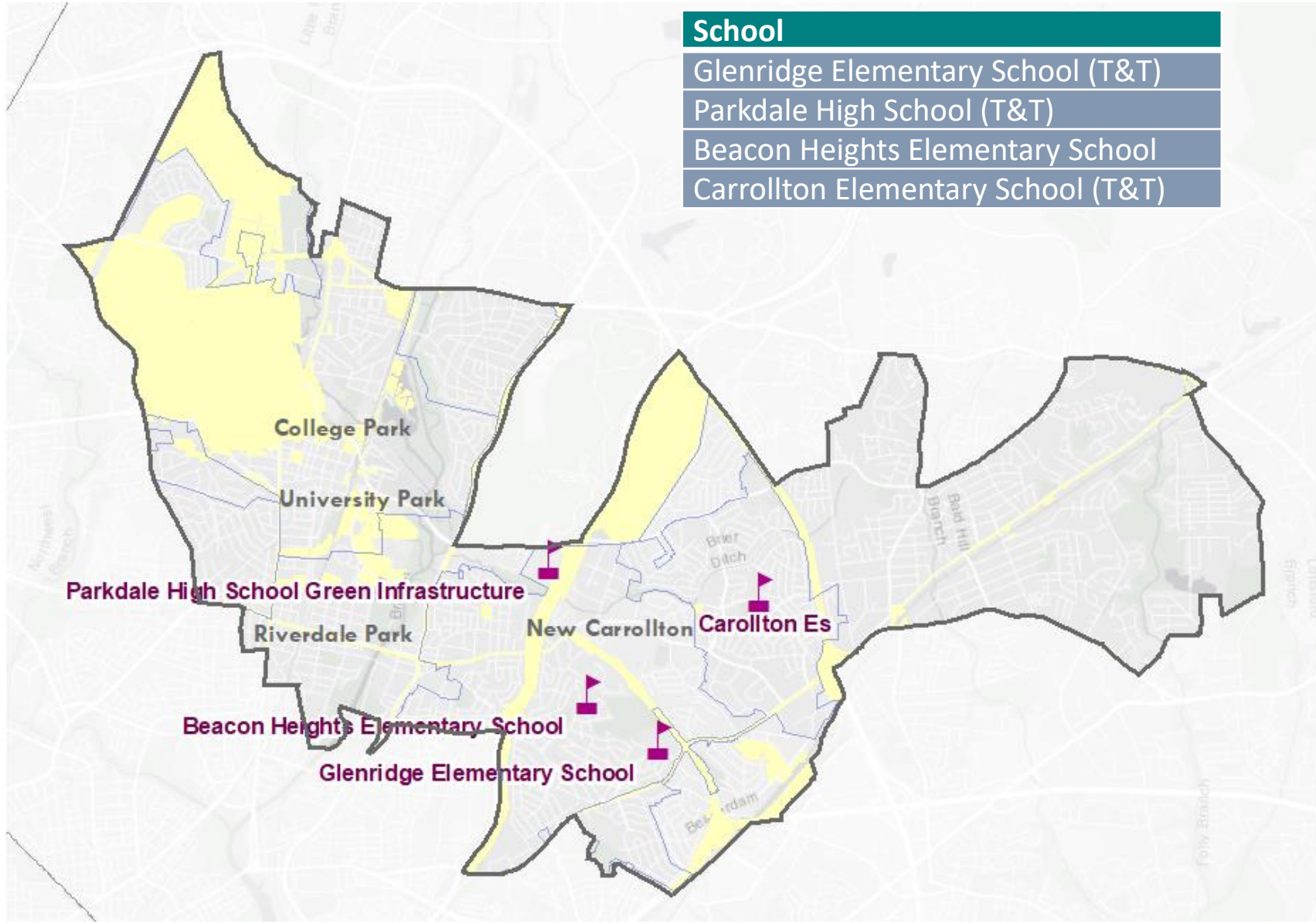


Briers Mill Run – Door Hanger Distribution

CWP SCHOOLS PROGRAM DISTRICT 3

-  CWP School
-  Municipal Boundary
-  Non-County MS4 Regulated Area

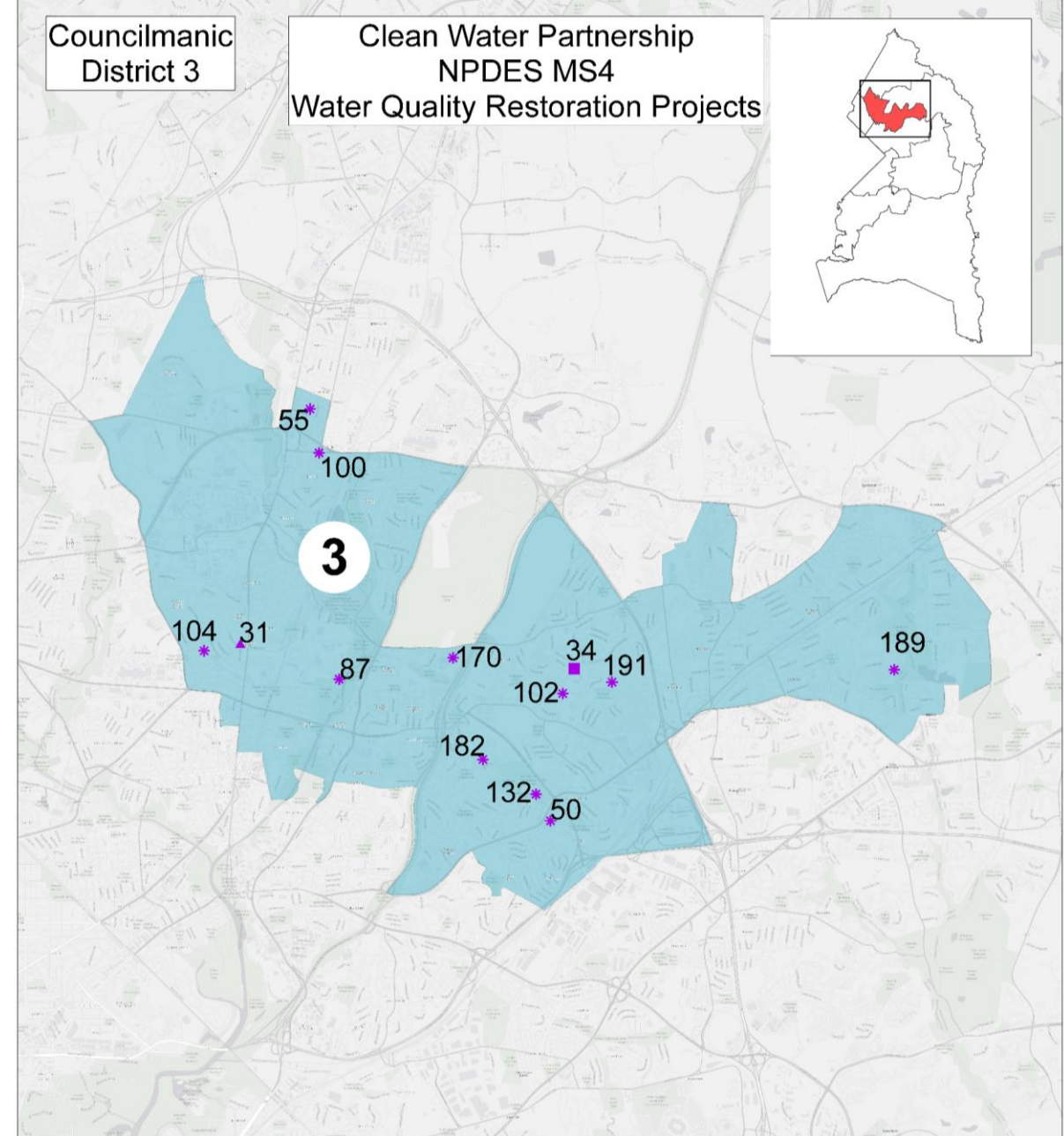
Note: T&T = Treating & Teaching Program Participant



CWP PROJECTS IN DISTRICT 3

Project Name	Map ID
Beacon Heights Elementary School	182
Berwyn Baptist	55
Briers Mill Run Stream Restoration	34
Carrollton Es	191
Ebenezer Church of God	50
Glenn Estates Pond	189
Glenridge Elementary School	132
New Carrollton	102
Parkdale High School Green Infrastructure	170
Rhode Island Ave	100
Riverside Pond B	87
Town of University Park	104
University Park Micro-bioretenion Device	31

●	Design
▲	Planning
*	Completed
■	Construction



CONTRACTOR DEVELOPMENT IN DISTRICT 4

Cumulative Investments – District 4

District 4 Total Project
Construction Costs

\$15,721,370



Companies Located in District 4

CWP Primes

Company	Role
Essex Construction	Construction
Stormwater Maintenance & Consulting	Construction

Mentor Protégé Firms

Company	Services
Grace Management & Construction	Construction
Green Forever	Landscaping
Kirila Earthworks	Construction
M&G Services Inc	Construction

CWP Contractors

Company	Role
Bradley Site Design	Design
Capitol City Associates	Project Management
Century Fence Construction, LLC	Construction
Dirt Plus, Inc.	Construction
Independent Consultant Engineers	Engineering
Three E Consulting	Project Management
Quest Consulting	Project Management

CONTRACTOR DEVELOPMENT IN DISTRICT 4

Number of Companies

Engaged: 109



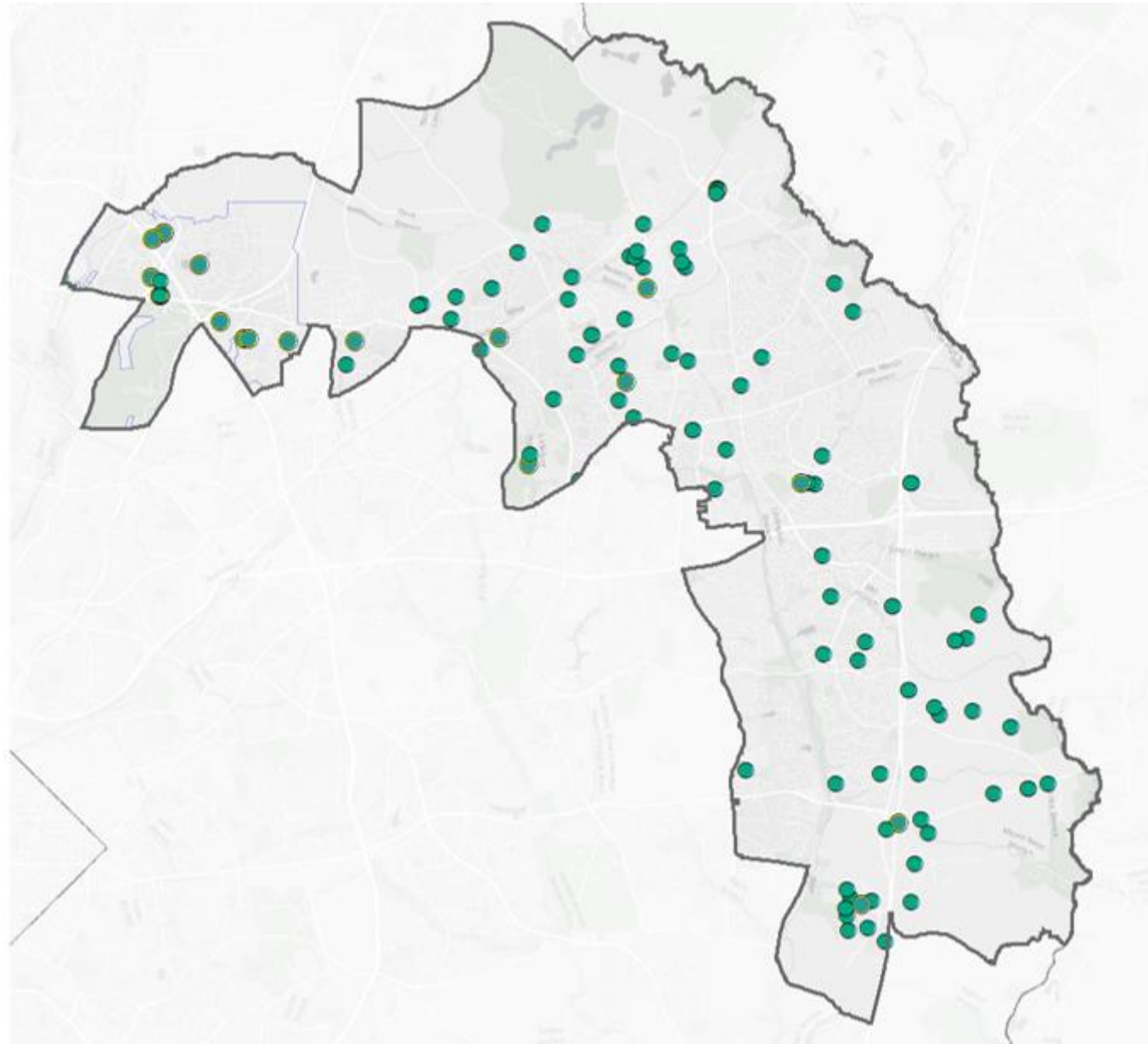
Discipline	No. Companies
Architecture/Engineering	2
Business Services	11
Concrete	9
Concrete; Paving	1
Construction	23
Construction Management	1
Construction; Paving	1
Engineering	3

Discipline	No. Companies
Engineering; Surveying	1
Environmental Consultant	2
Landscaping	47
Other	2
Paving	1
Paving/Concrete	1
Supplier	1
Technology	3

CONTRACTOR DEVELOPMENT DISTRICT 4

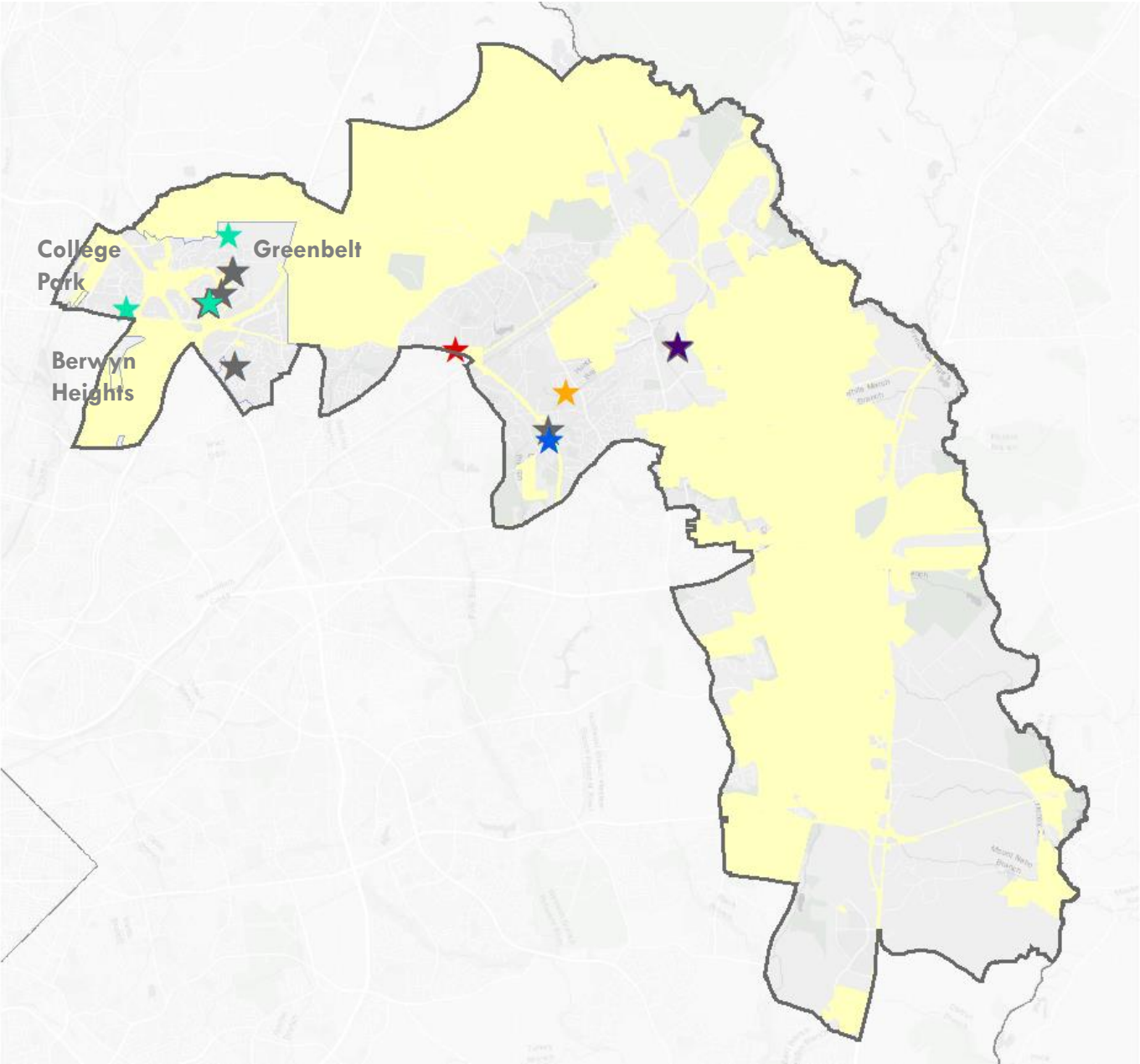
● Businesses Engaged
over Time

□ Municipal Boundary



COMMUNITY OUTREACH EFFORTS IN 2020 DISTRICT 4




- ★ Community Meeting/Event (3)
- ★ One-on-one Meeting (1)
- ★ Outreach Materials Distribution (2)
- ★ Project Groundbreaking Event (1)
- ★ Project Closeout Event (2)
- ★ General Outreach (6)
- ★ 2019 Event (25)
- Municipal Boundary
- Non-County MS4 Regulated Area



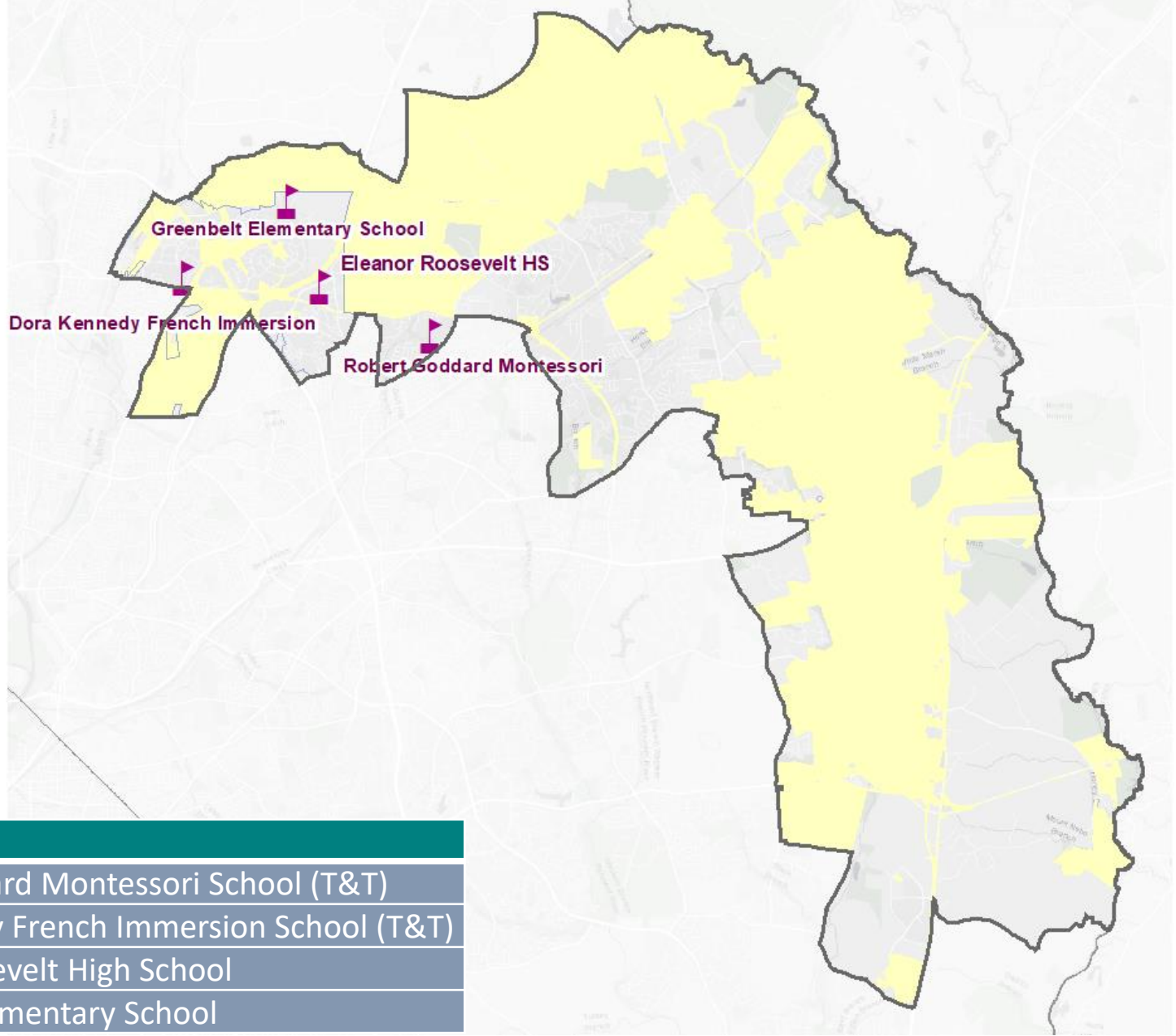
COMMUNITY ENGAGEMENT DISTRICT 4



CWP SCHOOLS PROGRAM DISTRICT 4

-  CWP School
-  Municipal Boundary
-  Non-County MS4 Regulated Area

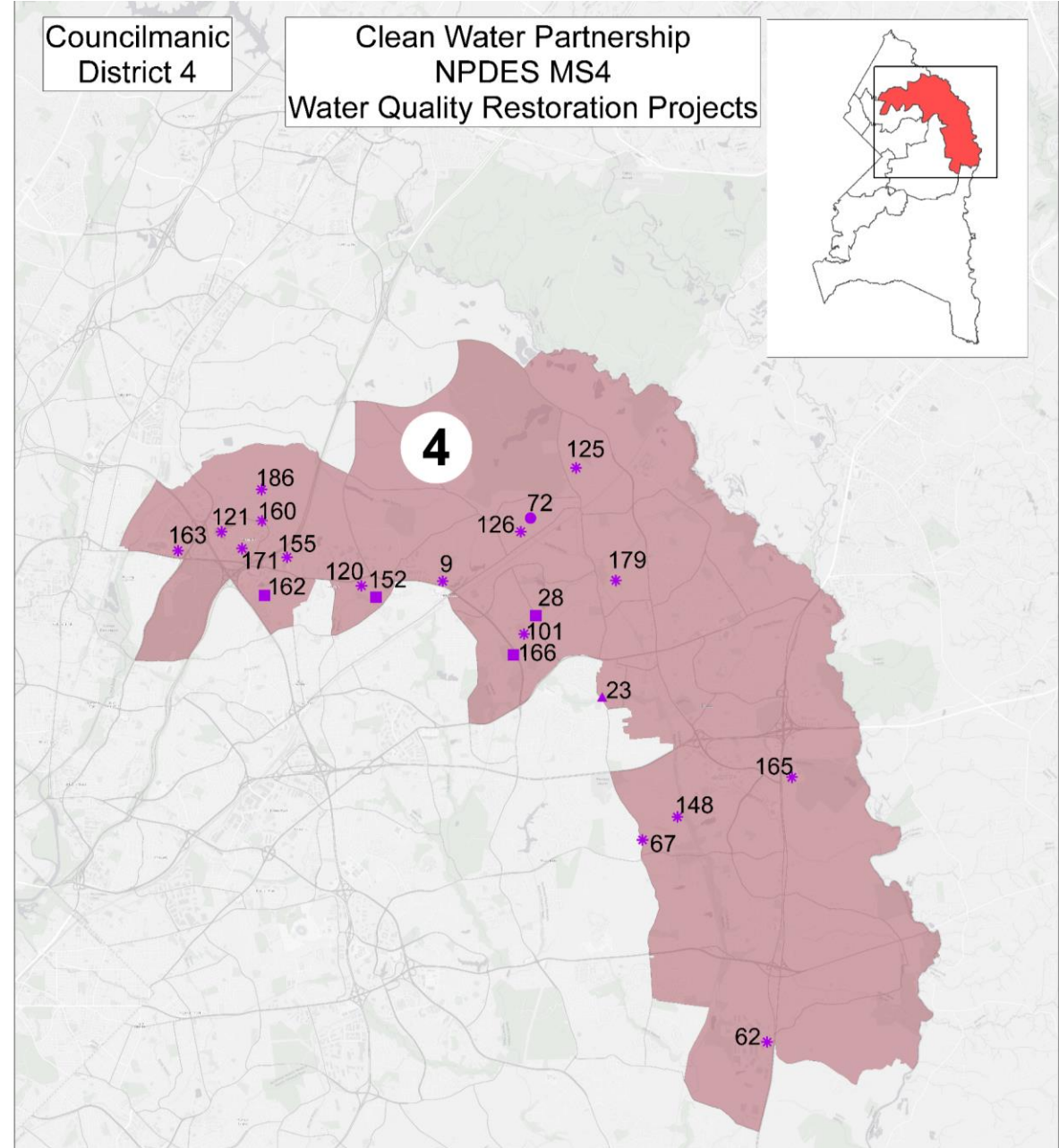
Note: T&T = Treating & Teaching Program Participant



Schools
Robert Goddard Montessori School (T&T)
Dora Kennedy French Immersion School (T&T)
Eleanor Roosevelt High School
Greenbelt Elementary School

CWP PROJECTS IN DISTRICT 4

Project Name	Map ID	Project Name	Map ID
601 Crain Highway (SW)	62	Mount Oak Manor SII P1	148
Adnell Woods	125	NAI Michaels Site	9
Collington Branch	23	Old Chapel Park	179
Crain LTD Pond	165	Presbyterian Church of	
Daisy Lane	101	Bowie	67
Dora Kennedy French		Robert Goddard	
Immersion	163	Montessori	152
Eleanor Roosevelt HS	155	Springfield Manor #1	126
Glendale Splash Park	166	Springfield Manor Pond #2	72
Greenbelt Church	160		
Greenbelt ES	186		
Greenbelt Lake	121		
Greenbelt Woods	120		
Greenbrook Lake	162		
Hillmeade Rd	28		
Jewish Community Center	171		



CONTRACTOR DEVELOPMENT IN DISTRICT 5

Cumulative Investments – District 5

District 5 Total Project
Construction Costs

\$12,022,242



Companies Located in District 5

Mentor Protégé Firms

Company	Services
Bourn Environmental, LLC	Construction
Clinton Sewer Expert	Construction

CWP Contractors

Company	Role
Anacostia Watershed Society	Environmental Consultant
Ben Dyer	Engineering
Cooper Enterprises	Landscaping

CONTRACTOR DEVELOPMENT IN DISTRICT 5

Number of Companies

Engaged: 114

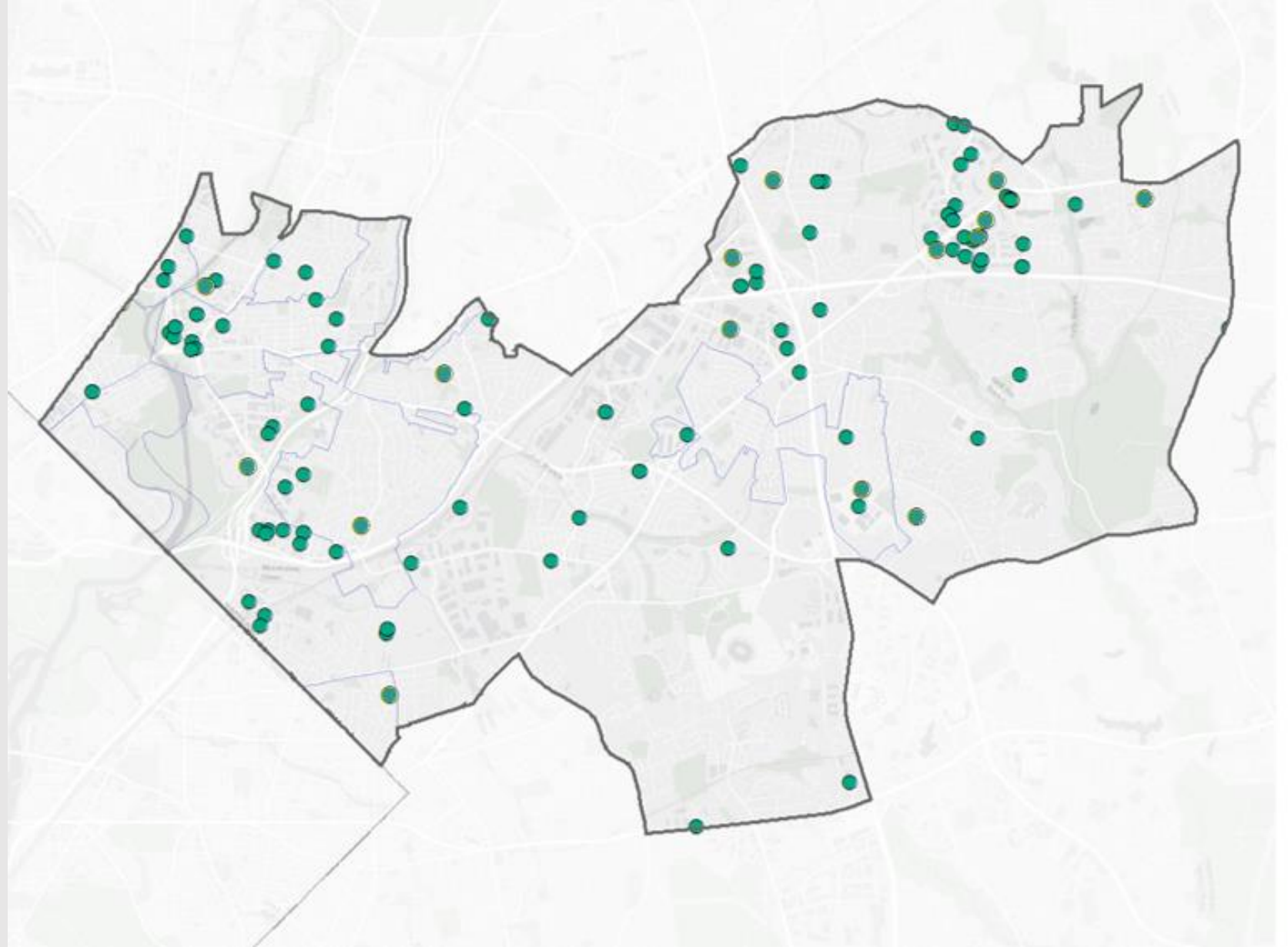
Discipline	No. Companies
Architecture/Engineering	2
Business Services	7
Concrete	9
Concrete; Construction	1
Concrete; Paving	1
Construction	28
Distributor	1
Architecture/Engineering	2
Business Services	7
Concrete	9
Concrete; Construction	1

Discipline	No. Companies
Concrete; Paving	1
Construction	28
Distributor	1
Distributor/Supplier	2
Engineering	7
Engineering; Surveying	1
Environmental Consultant	2
Landscaping	23
Other	9
Paving	6
Printing	1
Supplier	2
Technology	8
Trucking	1
Trucking; Landscaping	1
Workforce Organization	2

CONTRACTOR DEVELOPMENT DISTRICT 5

● Businesses Engaged
over Time

□ Municipal Boundary

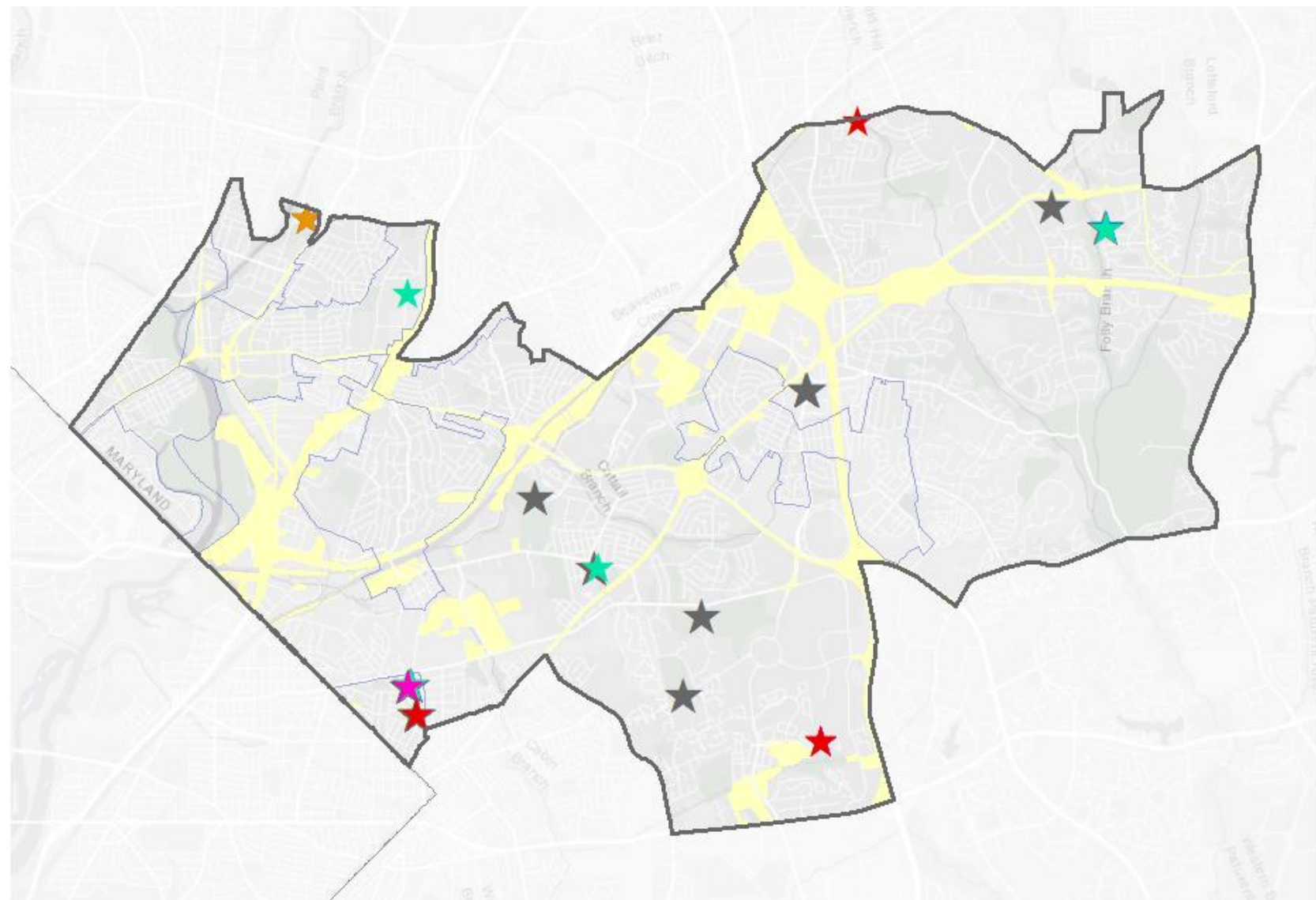


COMMUNITY ENGAGEMENT DISTRICT 5




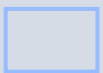

COMMUNITY OUTREACH EFFORTS IN 2019 DISTRICT 5

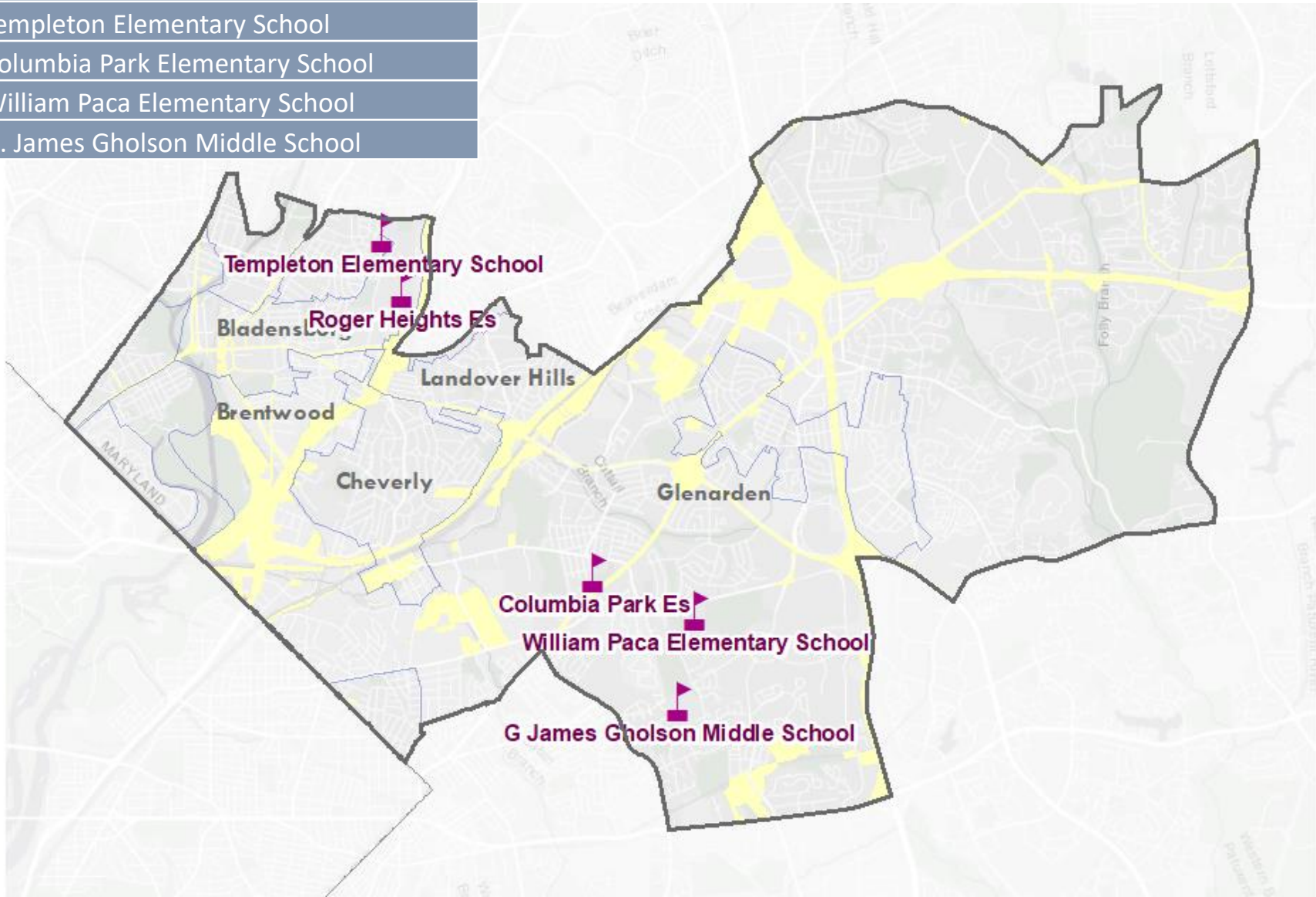
- ★ Community Meeting/Event (3)
- ★ One-on-one Meeting (2)
- ★ Outreach Materials Distribution (8)
- ★ Project Groundbreaking Event (1)
- ★ General Outreach (5)
- ★ 2019 Event (17)
- Municipal Boundary
- Non-County MS4 Regulated Area



CWP SCHOOLS PROGRAM DISTRICT 5

Schools
Rogers Heights Elementary School
Templeton Elementary School
Columbia Park Elementary School
William Paca Elementary School
G. James Gholson Middle School

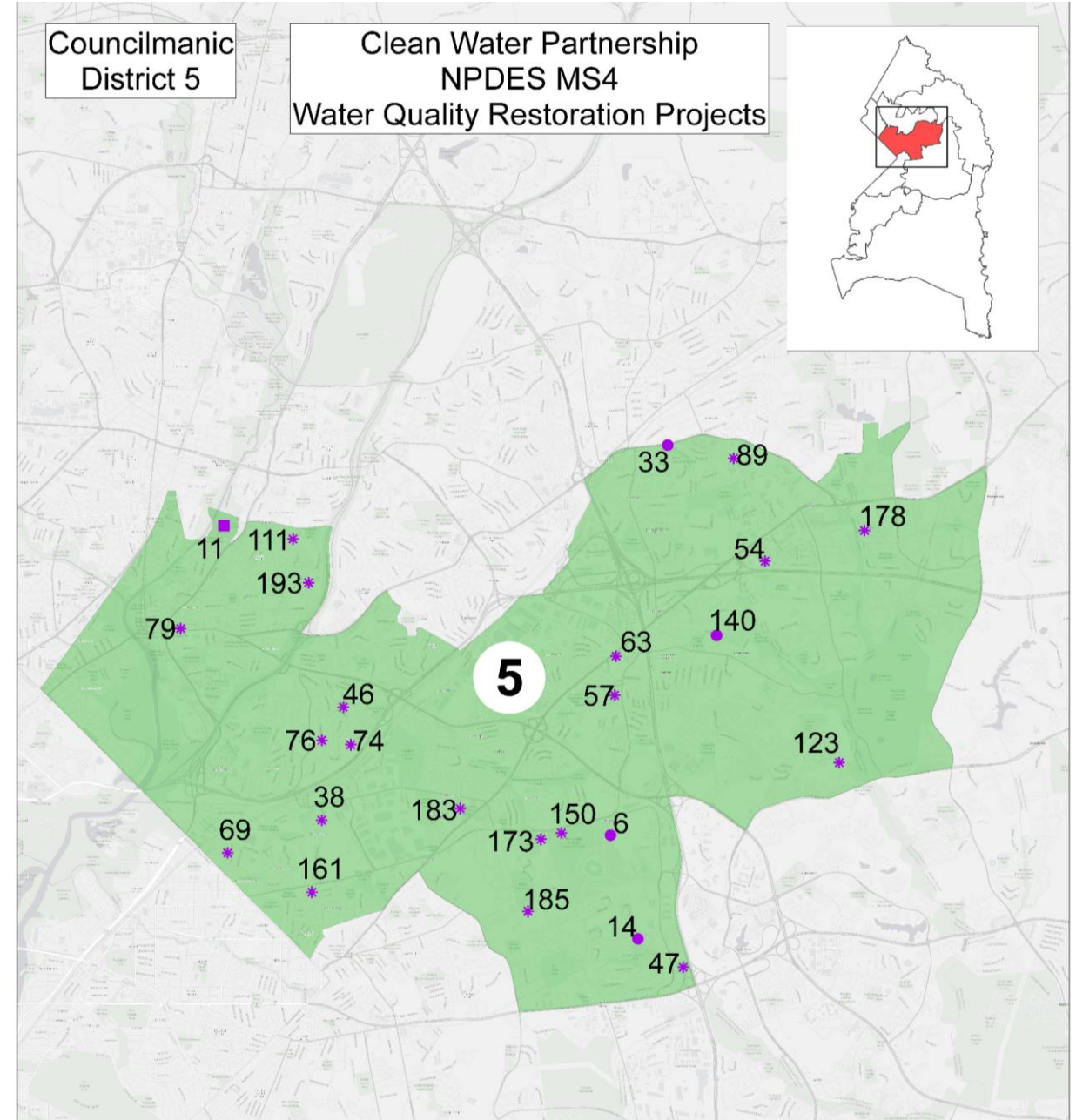
-  CWP School
-  Municipal Boundary
-  Non-County MS4 Regulated Area



CWP PROJECTS IN DISTRICT 5

Project Name	Map ID	Project Name	Map ID
1400 Doewood Lane	69	Redskins Stadium #3	6
61st Avenue Municipal	161	Redskins Stadium #1	150
Bald Hill Branch Stream Restoration	33	Roger Heights Es	193
Cheverly Community Church	76	Springdale Section II	140
Collington Life Care Center	123	St Ambrose	46
Columbia Park Es	183	Summerfield #1	14
Community Temple Bible Way	38	Templeton ES	111
Edmonston Road	79	Town of Cheverly	74
First Baptist Glenarden	47	Washington Business Park	89
First Baptist Glenarden	63	William Paca ES	173
Fletchers Field Stream Restoration	11		
G James Gholson MS	185		
Glenarden Branch Library	57		
IBEX Pond	54		
Parcel D Lakeview	178		

- Design
- ▲ Planning
- * Completed
- Construction



CONTRACTOR DEVELOPMENT IN DISTRICT 6

Cumulative Investments – District 6

District 6 Total Project
Construction Costs

\$17,437,201



Companies Located in District 6

CWP Primes

Company	Role
D&F Construction	Construction



CONTRACTOR DEVELOPMENT IN DISTRICT 6

Number of Companies

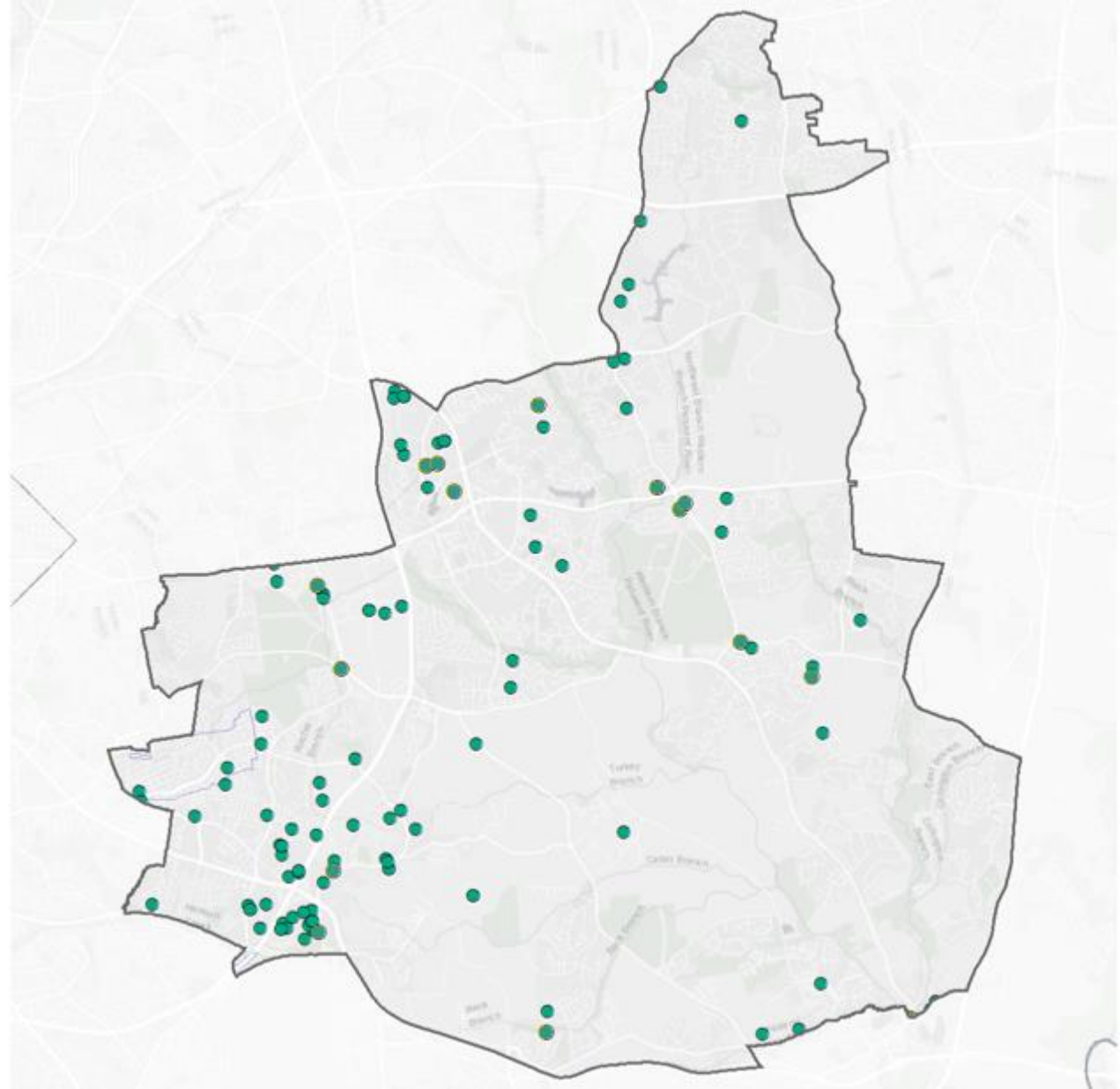
Engaged: 127

Discipline	No. Companies
Architecture/Engineering	1
Business Services	11
Concrete	11
Concrete; Construction	1
Concrete; Rock Lawns & Rockscaping	1
Construction	27
Construction; Distributor/Supplier	1
Distributor	1

Discipline	No. Companies
Distributor/Supplier	3
Employment	1
Engineering	6
Environmental Consultant	1
Landscaping	31
Other	9
Paving	4
Printing	1
Supplier	1
Technology	7
Trucking	5
Trucking; Environmental Consultant; Construction	1
Workforce Organization	3

● Businesses Engaged over Time

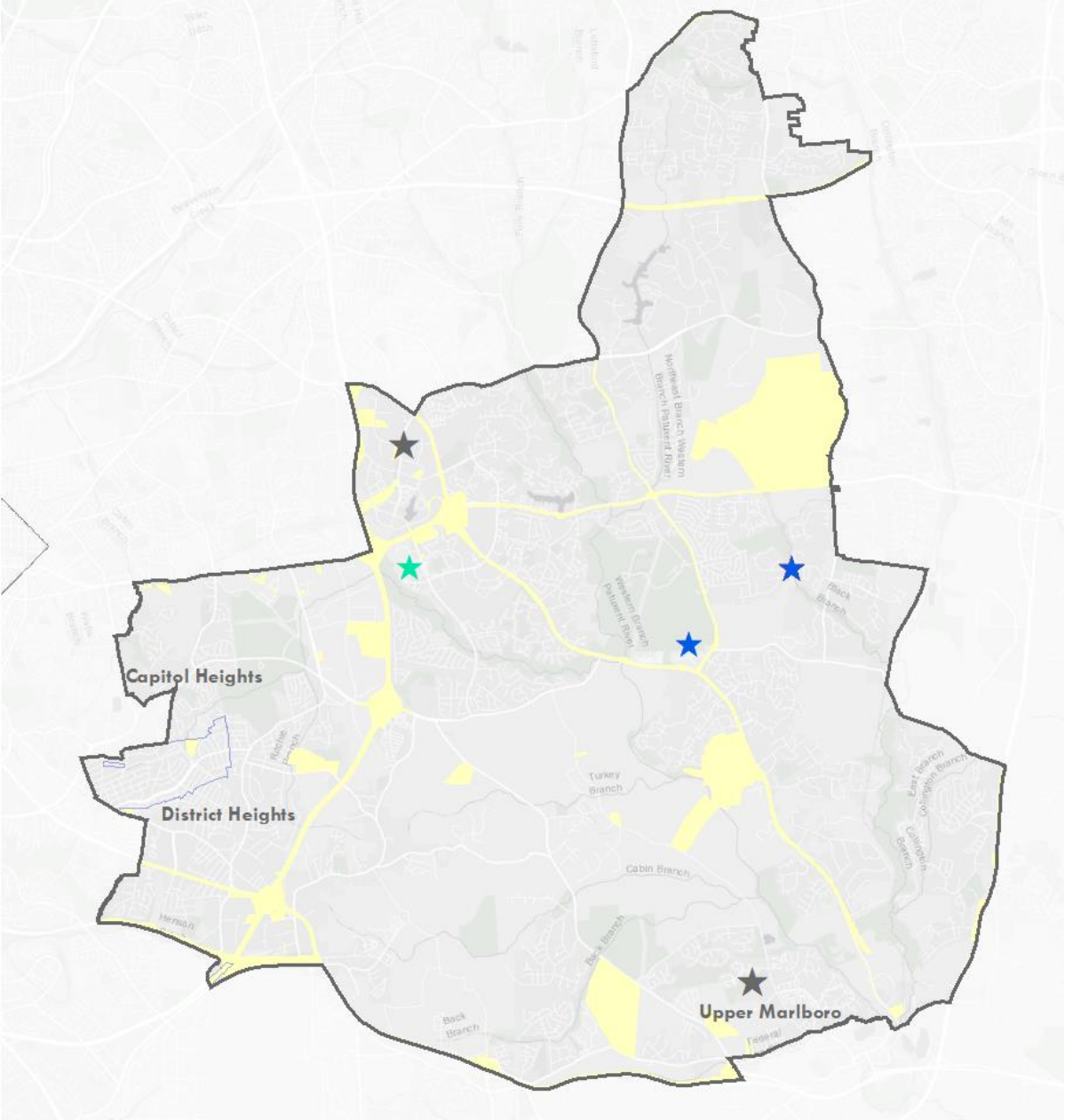
 Municipal Boundary



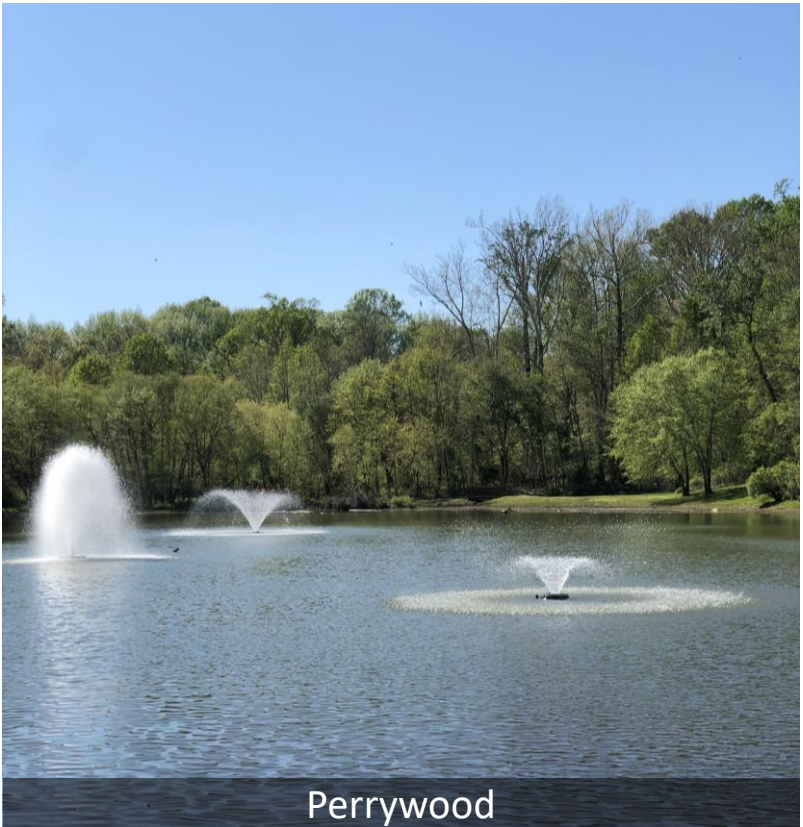
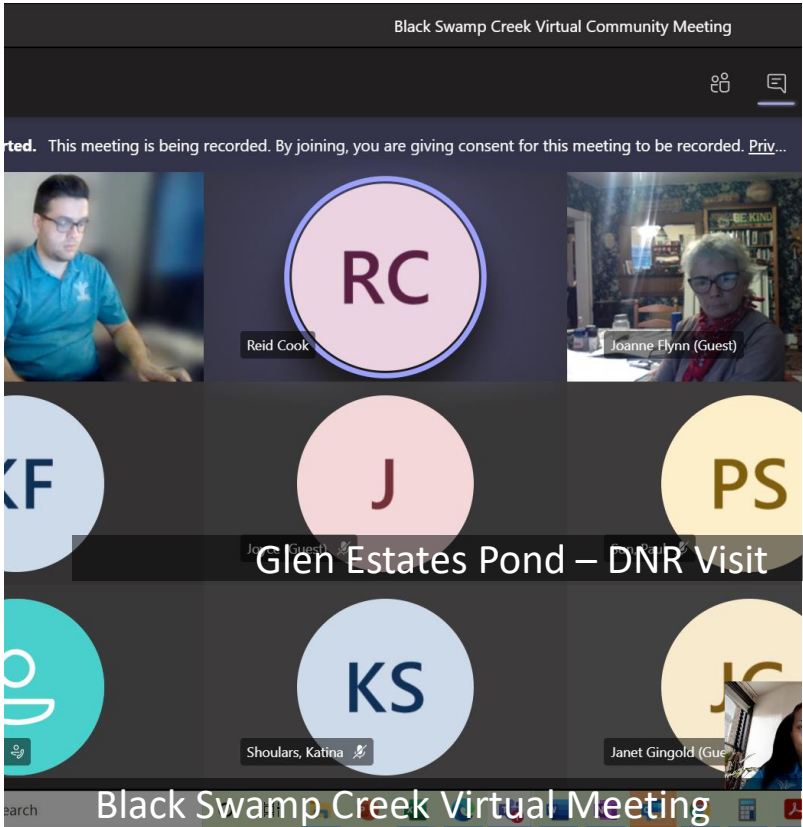
COMMUNITY OUTREACH EFFORTS IN 2020

DISTRICT 6


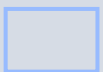

- ★ Community Meeting/Event (3)
- ★ Outreach Materials Distribution (3)
- ★ General Outreach (1)
- ★ 2019 Event (4)
- Municipal Boundary
- Non-County MS4 Regulated Area



COMMUNITY ENGAGEMENT DISTRICT 6

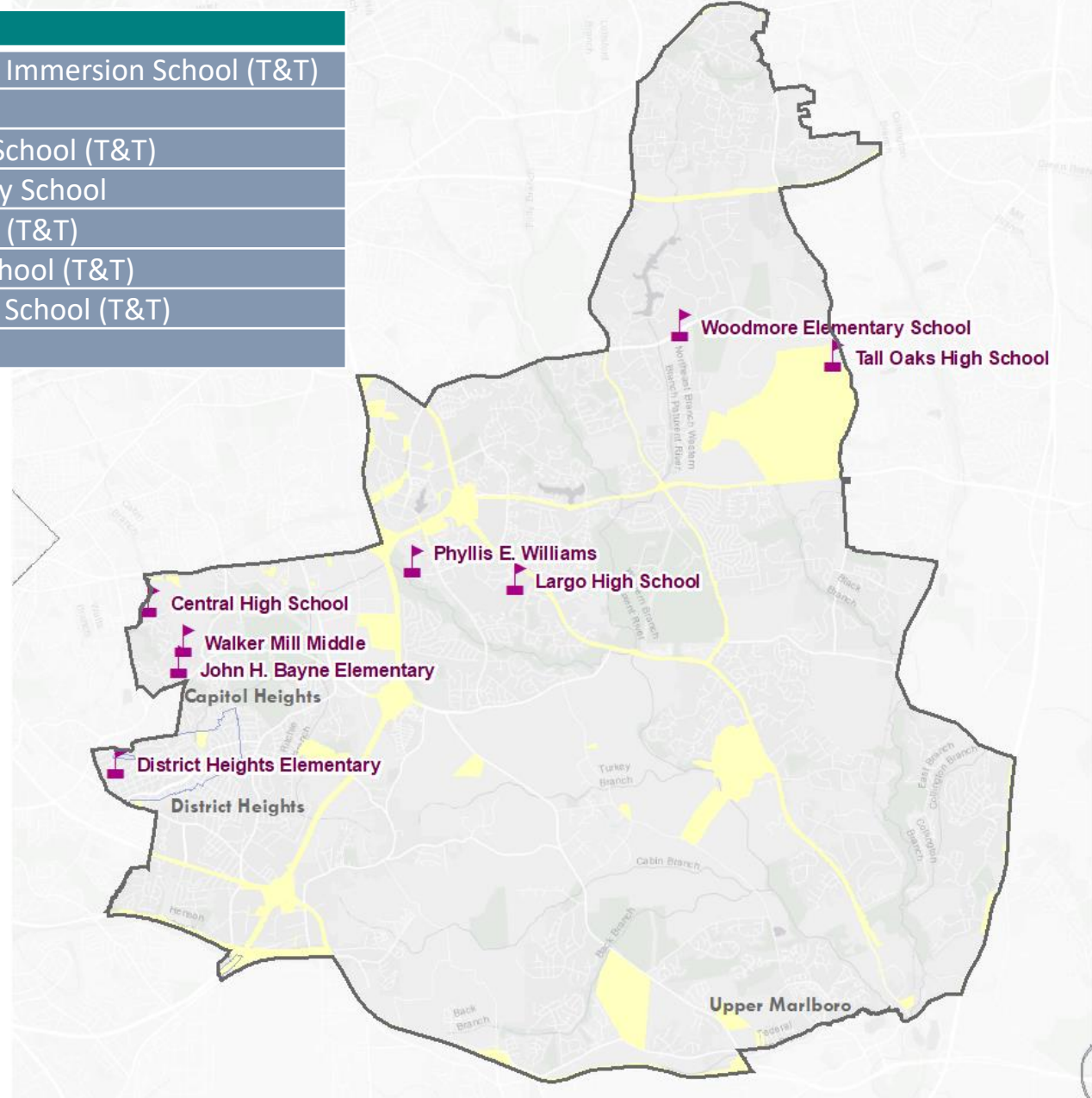


CWP SCHOOLS PROGRAM DISTRICT 6

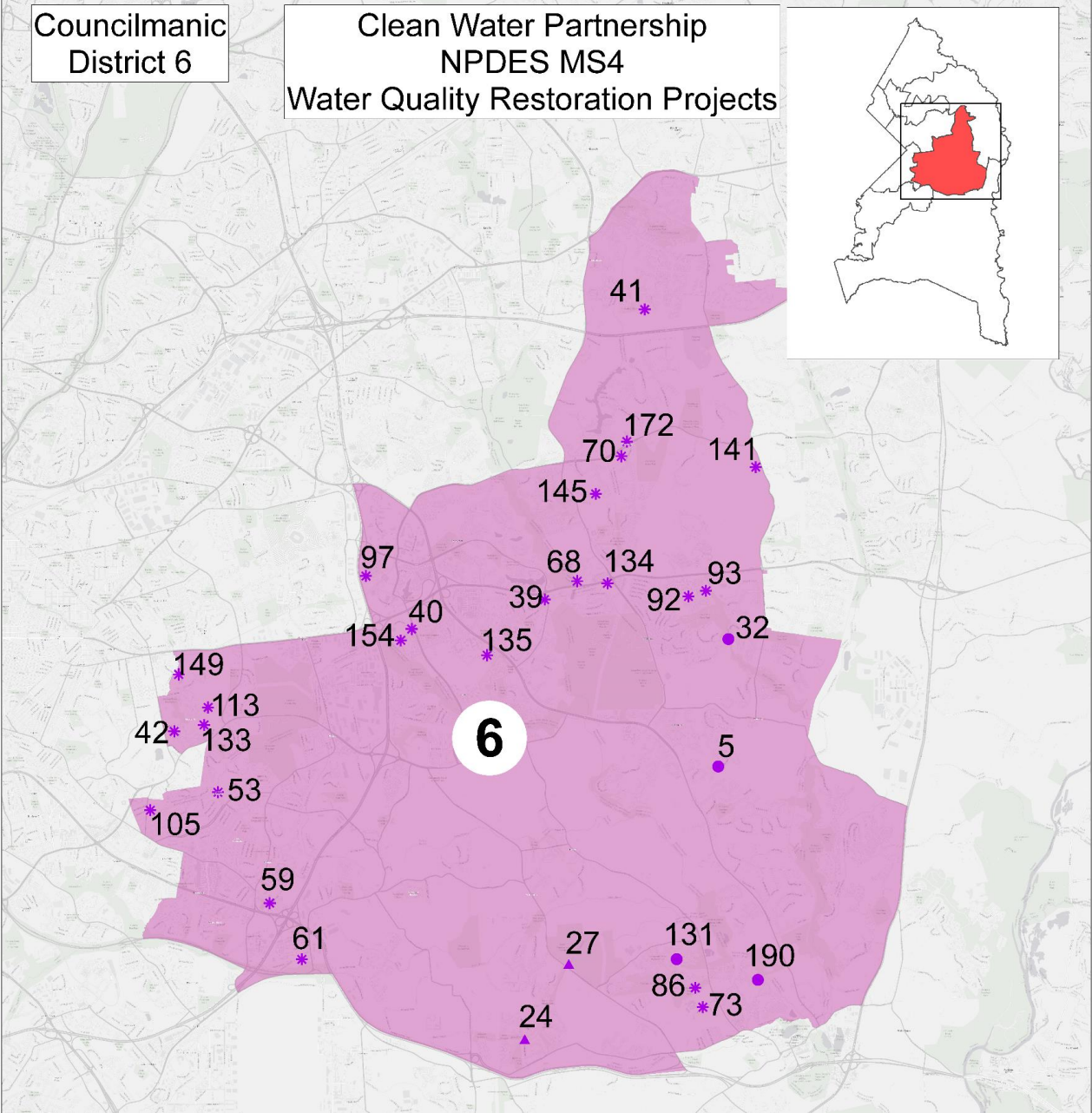
-  CWP Schools Program
-  Municipal Boundary
-  Non-County MS4 Regulated Area

Note: T&T = Treating & Teaching Program Participant

School
Phyllis E. Williams Spanish Immersion School (T&T)
Central High School
Tall Oaks Vocational High School (T&T)
District Heights Elementary School
Walker Mill Middle School (T&T)
Woodmore Elementary School (T&T)
John H. Bayne Elementary School (T&T)
Largo High School



CWP PROJECTS IN DISTRICT 6



CONTRACTOR DEVELOPMENT IN DISTRICT 7

Number of Companies

Engaged: 35



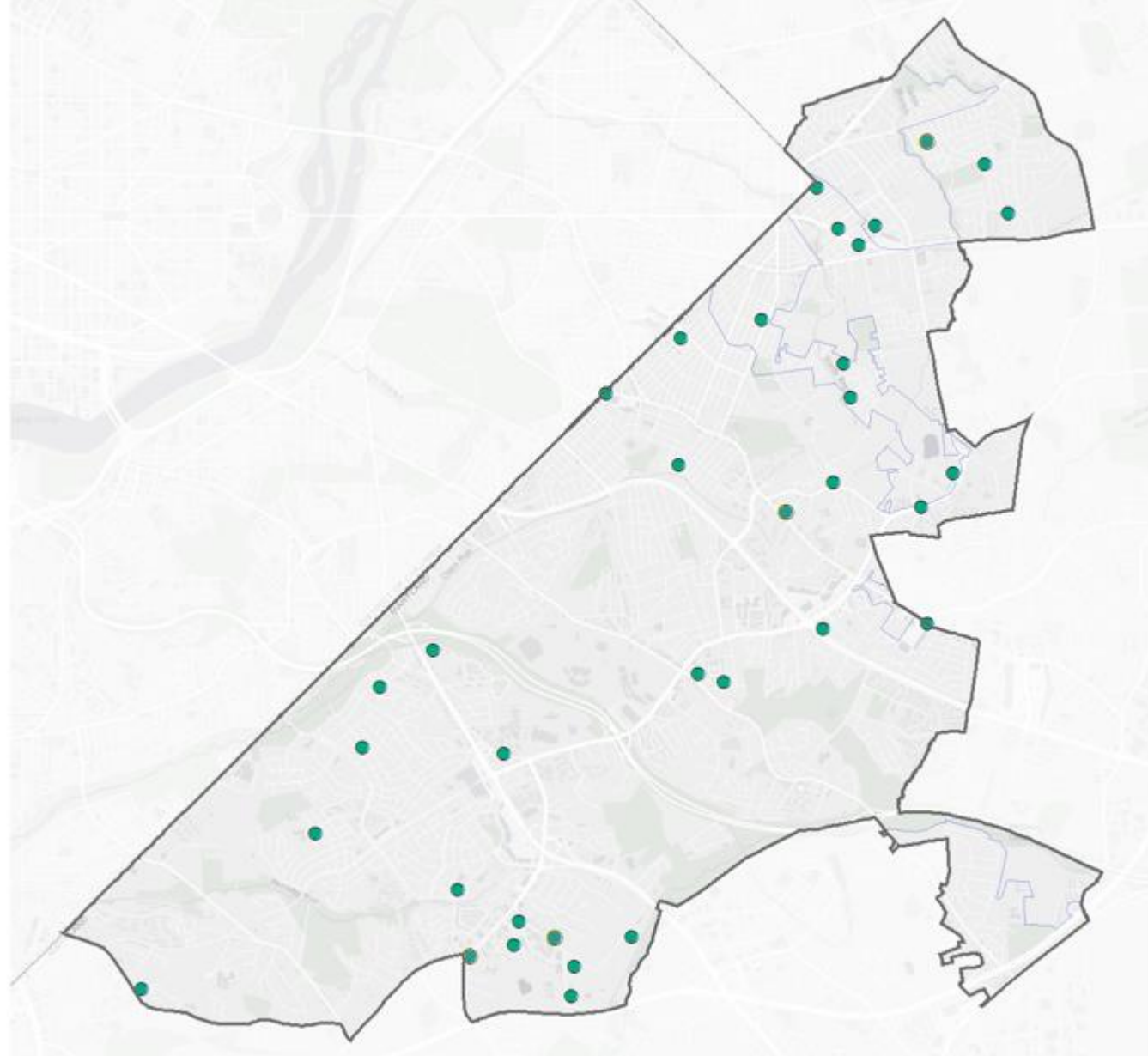
Discipline	No. Companies
Business	1
Business Services	3
Concrete	1
Concrete; Paving	1
Construction	6
Distributor	1

Discipline	No. Companies
Distributor/Supplier	1
Landscaping	15
Other	2
Paving	2
Trucking	1
Workforce Organization	1

CONTRACTOR DEVELOPMENT DISTRICT 7

● Businesses Engaged
over Time

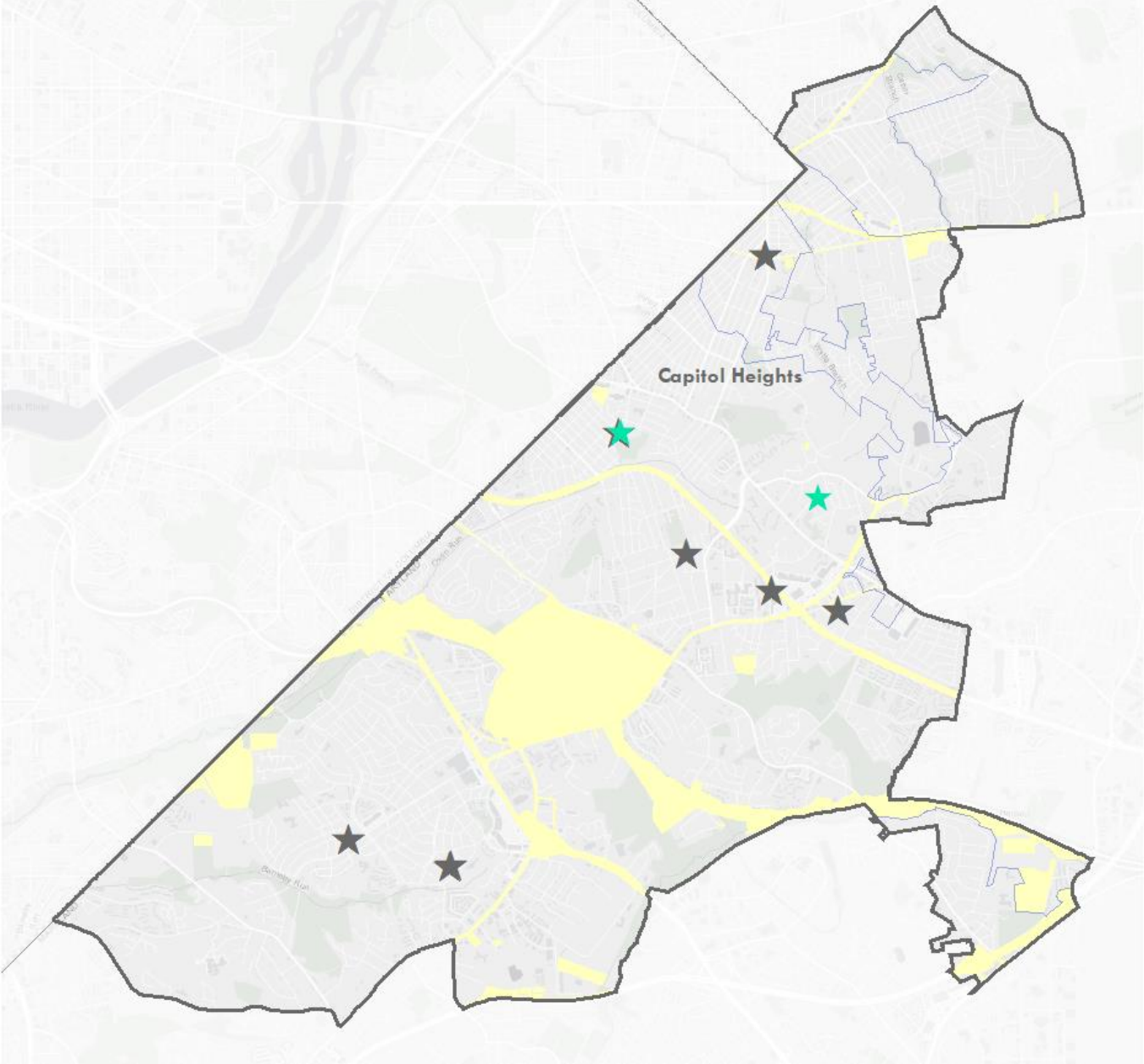
□ Municipal Boundary



COMMUNITY OUTREACH EFFORTS IN 2020

DISTRICT 7

- ★ General Outreach (2)
- ★ 2019 Event (10)
- ▭ Municipal Boundary
- ▭ Non-County MS4 Regulated Area



COMMUNITY ENGAGEMENT DISTRICT 7



Concord Elementary School



John Howard

**CLEAN WATER PARTNERSHIP
OAKLANDS STREAM
RESTORATION PROJECT**

VIRTUAL COMMUNITY MEETING

The Clean Water Partnership will be hosting a virtual community meeting to present the new project designed to stabilize the eroded stream bed, restore natural aquatic ecosystems and improve water quality. Spanish translation will be available.

Date: Wednesday, July 1, 2020
Time: 6:30 pm
Join by Phone (to hear presentation): 1-301-715-8592
Meeting ID: 750 2850 0769
Password: 226264
Find Your Local Number: <https://us02web.zoom.us/j/Sz2RvY>
If you have any questions please contact: Jan Kendrick@thecleanwaterpartnership.com
For more information, please visit: www.thecleanwaterpartnership.com
Register here for a virtual presentation of the virtual Zoom meeting: <https://www.eventbrite.com/the-clean-water-partnership-oaklands-stream-restoration-project-tickets-110327612850>
Once registered, you will receive an email with meeting details.

Or scan to register >

Corvias

**CLEAN WATER PARTNERSHIP
OAKLANDS STREAM
RESTORATION PROJECT**

REUNION COMUNITARIA VIRTUAL

Clean Water Partnership ofrecerá una reunión comunitaria virtual para presentar el nuevo proyecto diseñado para estabilizar el lecho erosionado de la corriente, restaurar los ecosistemas acuáticos naturales y mejorar la calidad del agua. Habrá traducción al Español disponible.


Fecha: Miércoles, Julio 1, 2020
Hora: 6:30 pm
Únase por Teléfono (para escuchar la presentación): 1-301-715-8592
ID de la Reunión: 750 2850 0769
Contraseña: 226264
Encuentre su Número Local Aquí: <https://us02web.zoom.us/j/Sz2RvY>
Si tiene alguna pregunta, comuníquese con: Jan Kendrick@thecleanwaterpartnership.com
Para mayor información por favor visite: www.thecleanwaterpartnership.com
Regístrese Aquí: <https://www.eventbrite.com/the-clean-water-partnership-oaklands-stream-restoration-project-tickets-110327612850>
Una vez se registre, usted recibirá un email con los detalles de la reunión.

O escanee para registrarse >

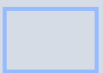
Corvias

Oaklands Stream Restoration Door Knockers (English & Spanish)

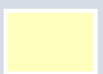
CWP SCHOOLS PROGRAM DISTRICT 7



CWP School



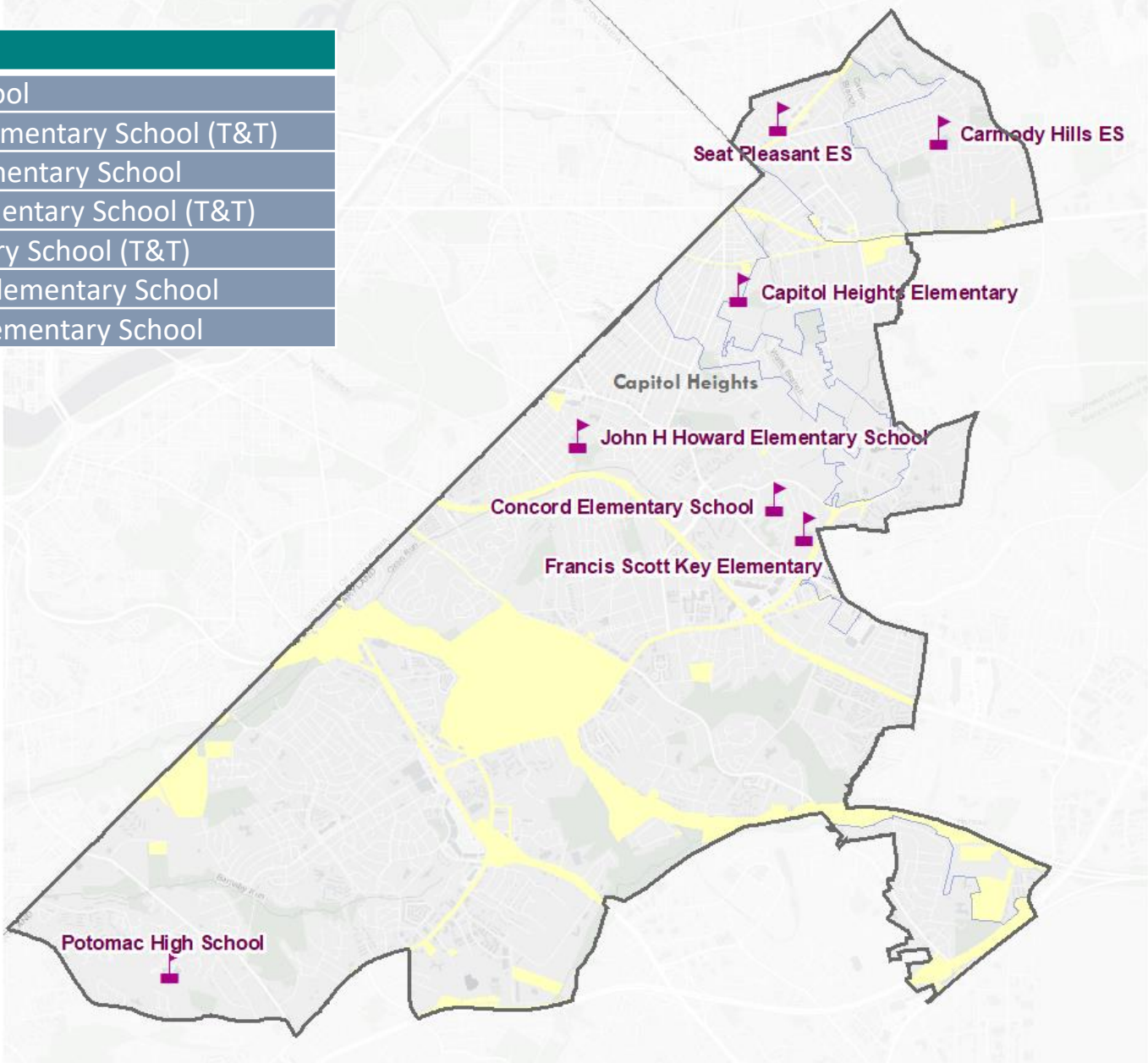
Municipal
Boundary



Non-County MS4
Regulated Area

Note: T&T = Treating &
Teaching Program Participant

Schools
Potomac High School
Capitol Heights Elementary School (T&T)
Carmody Hills Elementary School
Seat Pleasant Elementary School (T&T)
Concord Elementary School (T&T)
Francis Scott Key Elementary School
John E. Howard Elementary School



CWP PROJECTS IN DISTRICT 7

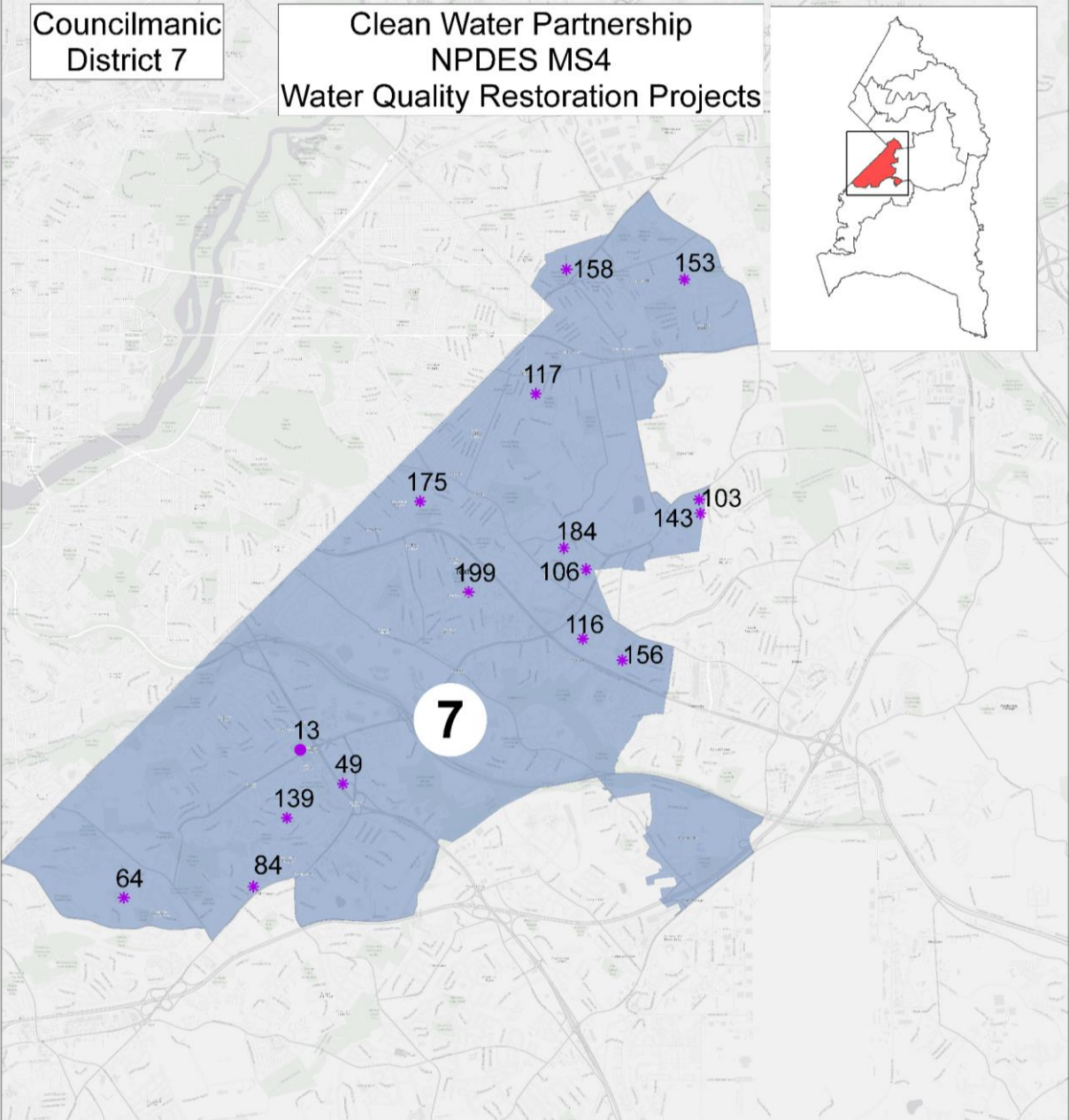
Cumulative Investments – District 7			
District 7 Total Project Costs			\$4,116,999
Project Name	Map ID	Project Name	Map ID
4711 Davis Avenue	199	Potomac High School	64
Capitol Heights Elementary	117	River of Life Church	139
Carmody Hills ES	153	Seat Pleasant ES	158
Concord Elementary School	184	Spauldings Branch Library	116
District Heights Plaza	156	Towns At Walker Mill	143
Francis Scott Key ES	106	Victory Christian Ministry	49
Iverson Mall	13		
John H Howard ES	175		
Karen Boulevard	103		
Our Saviour's Lutheran Church	84		

● Design

▲ Planning

* Completed

■ Construction



CONTRACTOR DEVELOPMENT IN DISTRICT 8

Cumulative Investments – District 8

District 8 Total Project
Construction Costs

\$6,616,124



Companies Located in District 8

Mentor Protégé Firms

Company	Services
Faulkner Land Care & Landscaping	Landscaping
G-11 Enterprises, Inc.	Construction

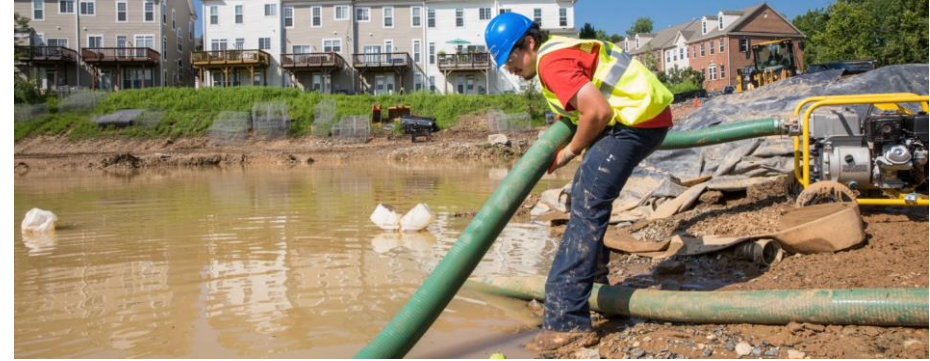
CWP Contractors

Company	Role
Alpine Snow Removal	Maintenance
Denison Landscaping	Landscaping
Dirt Worx	Construction
TreKnot	Project Management

CONTRACTOR DEVELOPMENT IN DISTRICT 8

Number of Companies

Engaged: 55



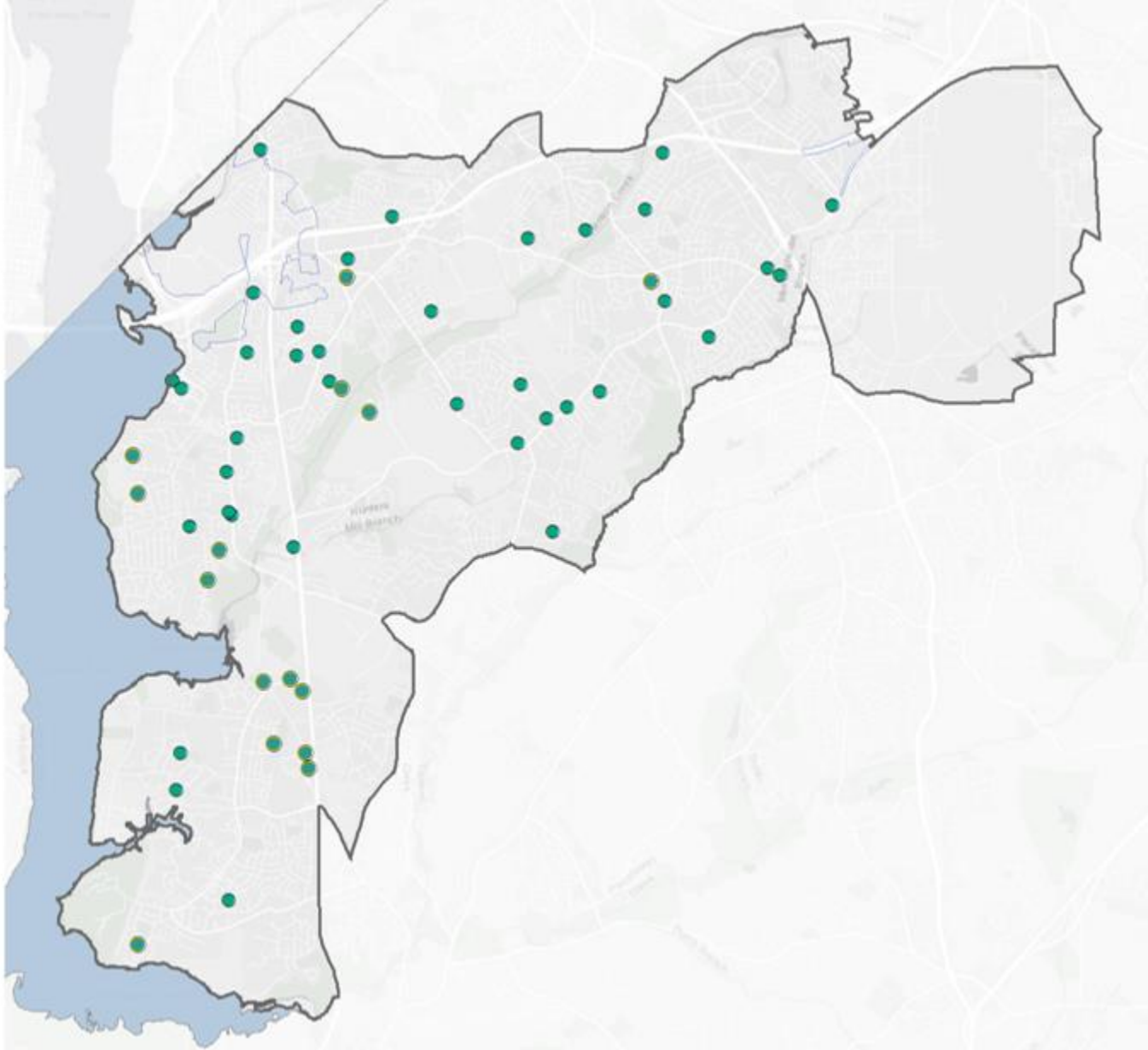
Discipline	No. Companies
Architecture/Engineering	2
Business Services	4
Concrete	1
Concrete; Paving	2
Construction	9
Engineering	3
Environmental Consultant	1

Discipline	No. Companies
Landscaping	23
Other	1
Paving	2
Printing	1
Technology	1
Trucking	4
Workforce Org	1

CONTRACTOR DEVELOPMENT DISTRICT 8

● Businesses Engaged
over Time

□ Municipal Boundary



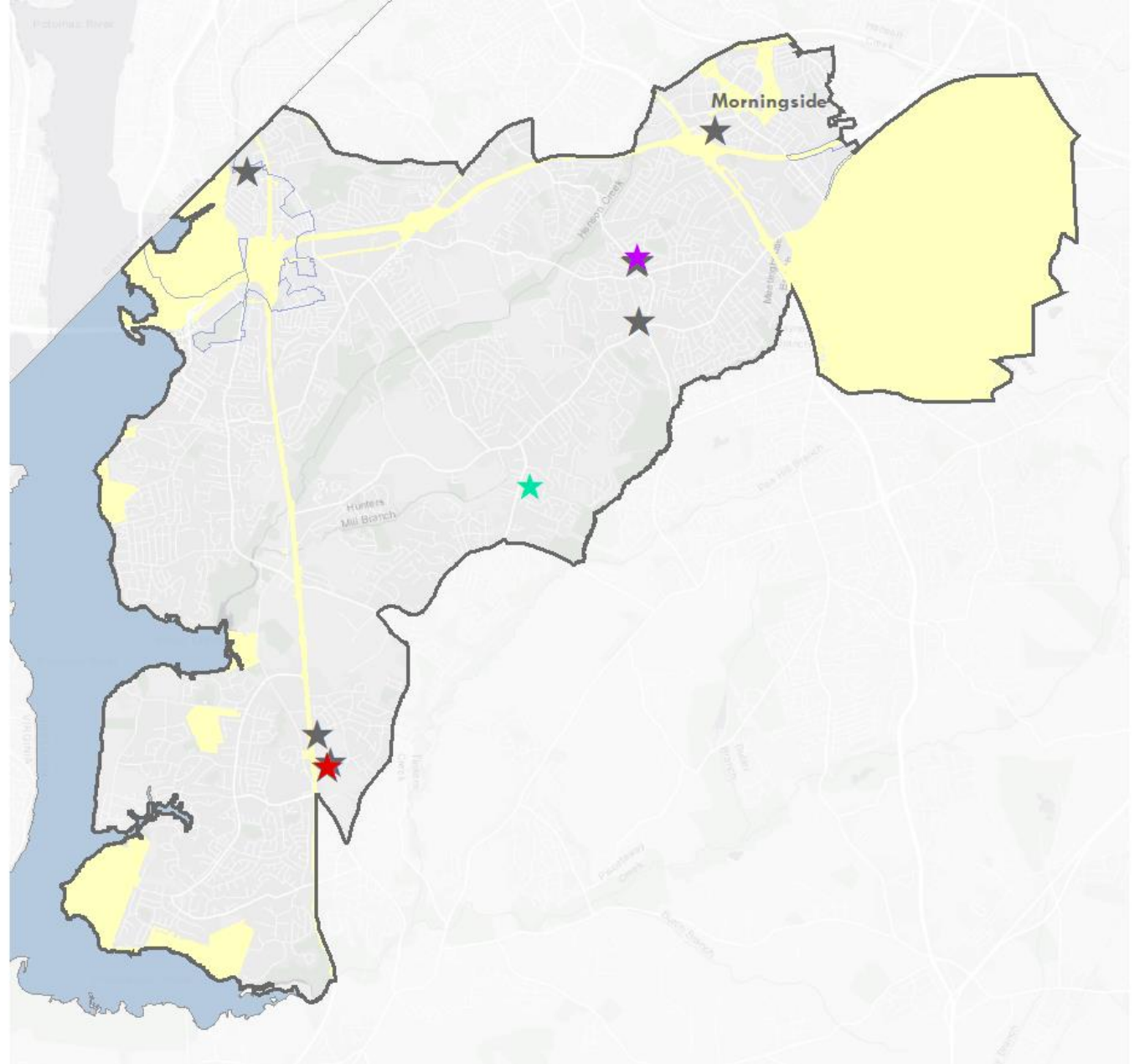
COMMUNITY ENGAGEMENT DISTRICT 8




COMMUNITY OUTREACH EFFORTS IN 2020

DISTRICT 8


- ★ Training Session (1)
- ★ Outreach Materials Distribution (2)
- ★ General Outreach (1)
- ★ 2019 Event (8)
- Municipal Boundary
- Non-County MS4 Regulated Area




CWP SCHOOLS PROGRAM DISTRICT 8



CWP School

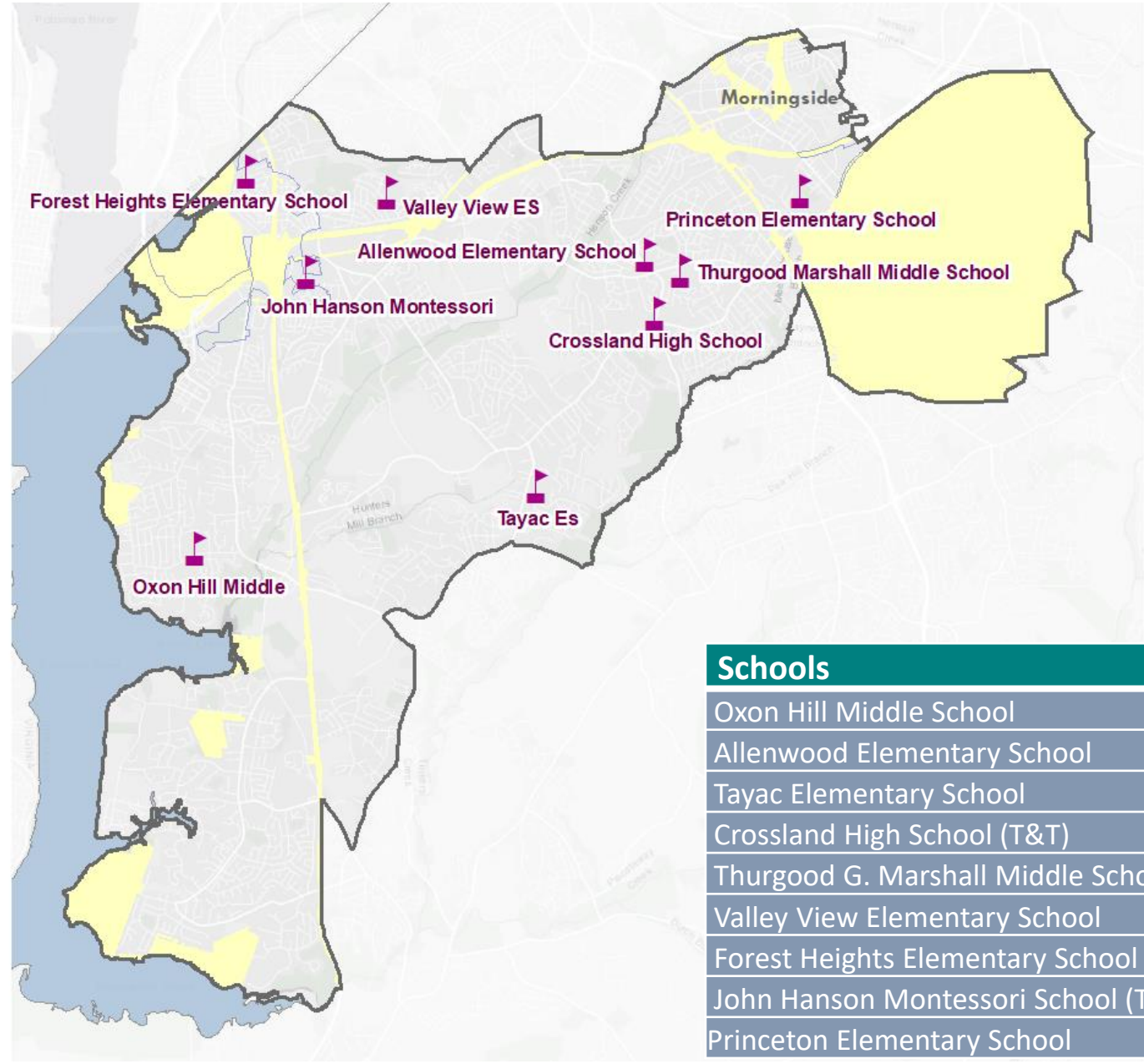


Municipal
Boundary



Non-County MS4
Regulated Area

Note: T&T = Treating & Teaching Program Participant



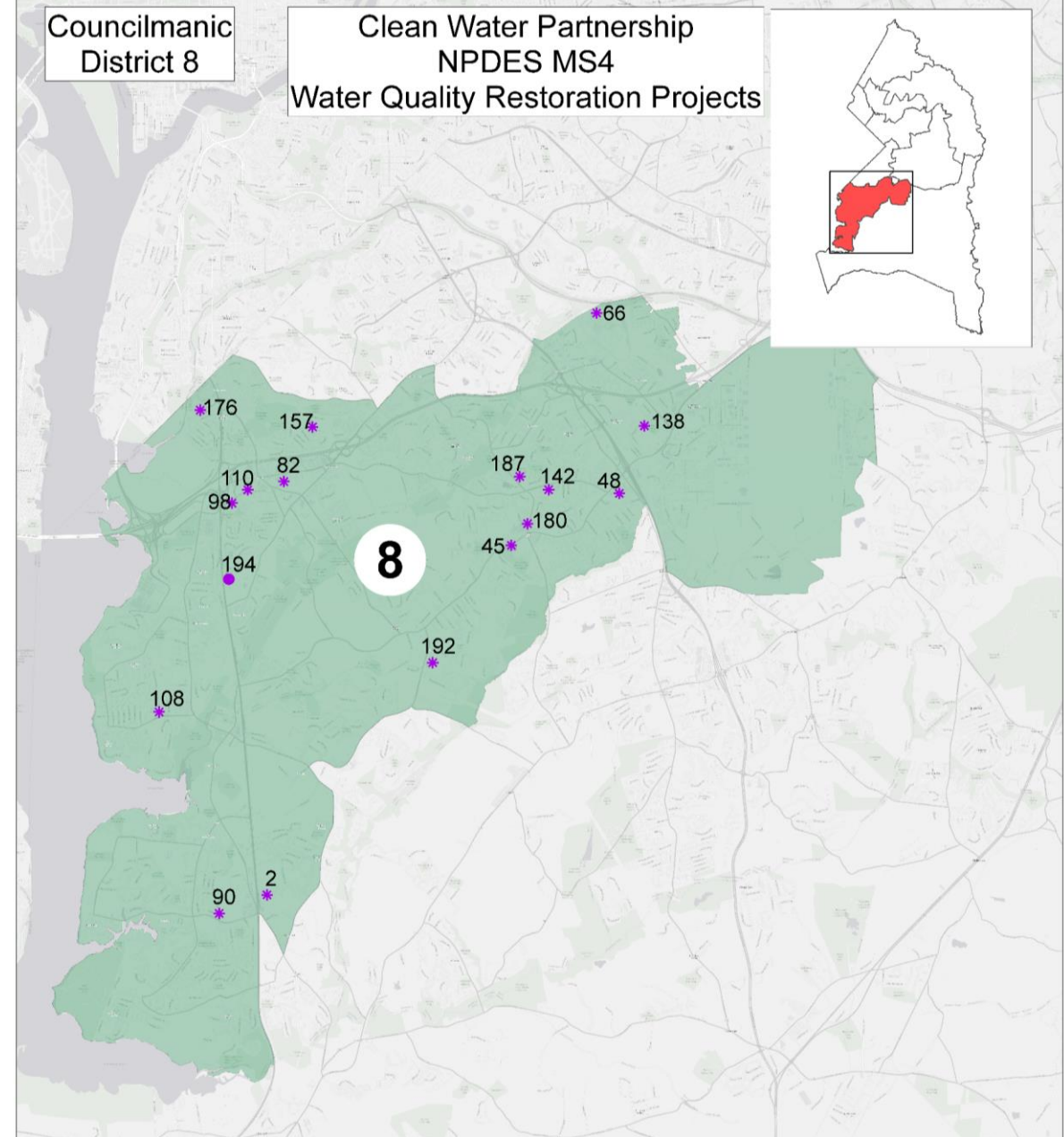
Schools
Oxon Hill Middle School
Allenwood Elementary School
Tayac Elementary School
Crossland High School (T&T)
Thurgood G. Marshall Middle School
Valley View Elementary School
Forest Heights Elementary School
John Hanson Montessori School (T&T)
Princeton Elementary School

CWP PROJECTS IN DISTRICT 8

Project Name	Map ID
Allenwood ES	187
Bethany Christian Church	45
Crossland High School	180
First Baptist Glenarden	48
Forest Heights ES	176
John Hanson Montessori	110
Livingston Woods	194
Oxon Hill Library	82
Oxon Hill Middle	108
Potomac Business Park Pond	98
Potomac Knolls HOA	2
Princeton ES	138
Tantallon Square	90

Project Name	Map ID
Tayac Es	192
Thurgood Marshall MS	142
Town Center at Camp Springs	66
Valley View ES	157

●	Design
▲	Planning
*	Completed
■	Construction



CONTRACTOR DEVELOPMENT IN DISTRICT 9

Cumulative Investments – District 9

District 9 Total Project
Construction Costs

\$24,727,447



Companies Located in District 9

Mentor Protégé Firms

Company	Services
Community Bridge	Landscaping; Maintenance

CWP Contractors

Company	Role
E&F Landscaping	Landscaping; Maintenance



CONTRACTOR DEVELOPMENT IN DISTRICT 9

Number of Companies

Engaged: 119



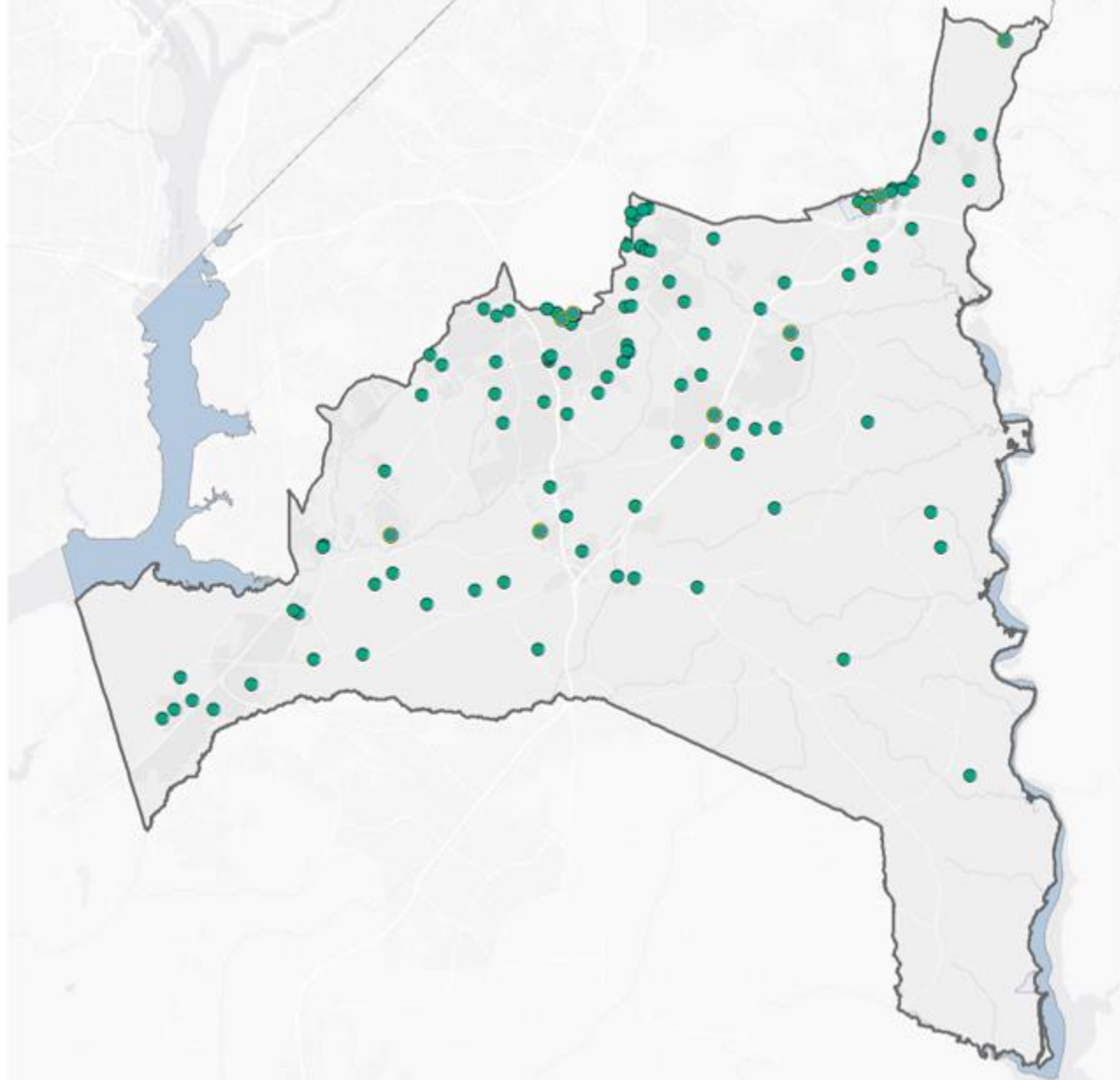
Discipline	No. Companies
Architecture/Engineering	2
Business Services	3
Concrete	5
Construction	31
Distributor	1
Engineering	2
Engineering; Surveying	1

Discipline	No. Companies
Landscaping	56
Other	6
Paving	2
Paving/Landscaping	1
Supplier	2
Technology	2
Trucking	5

CONTRACTOR DEVELOPMENT DISTRICT 9

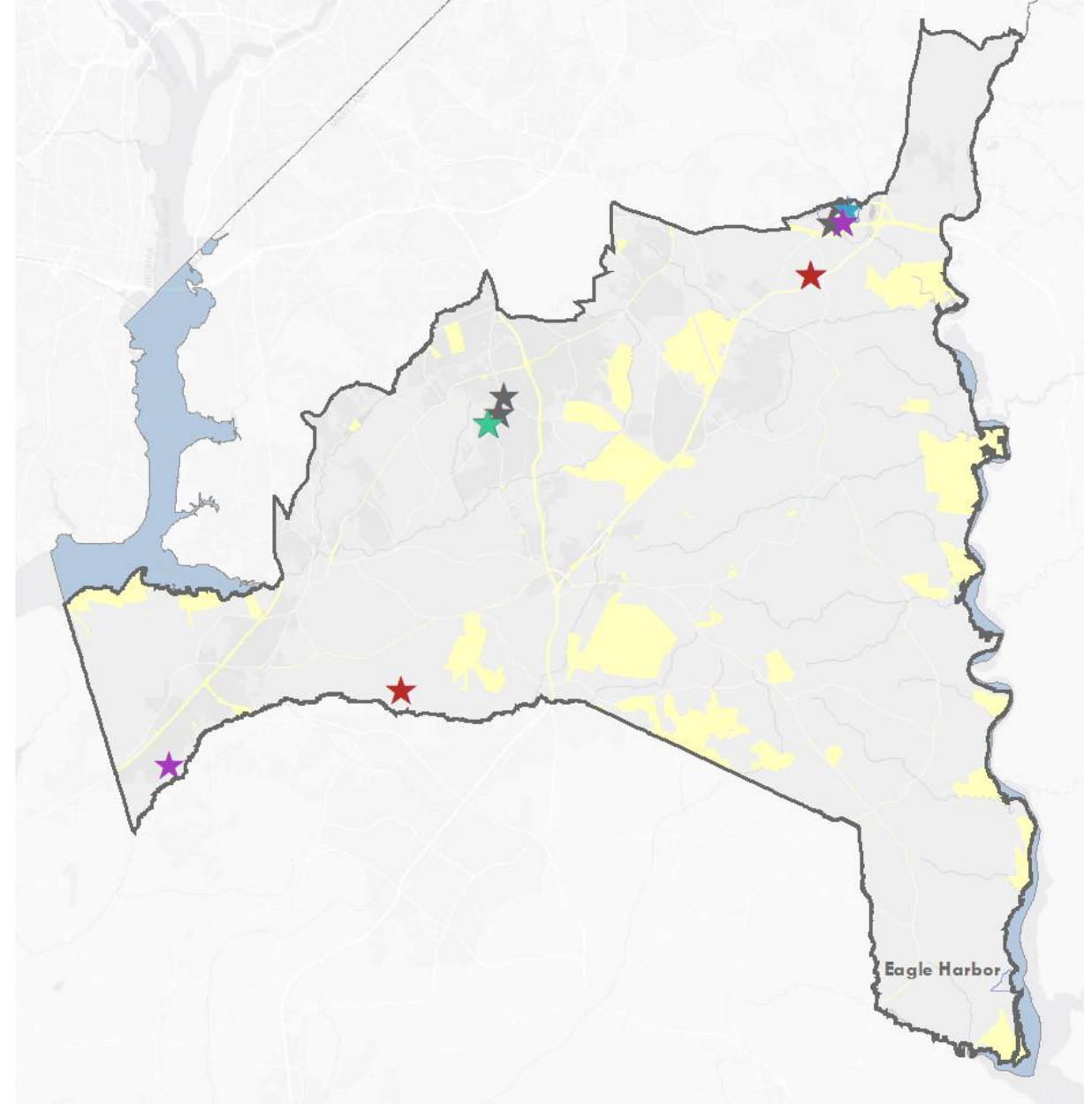
● Businesses Engaged
over Time

□ Municipal Boundary



COMMUNITY OUTREACH EFFORTS IN 2020 DISTRICT 9

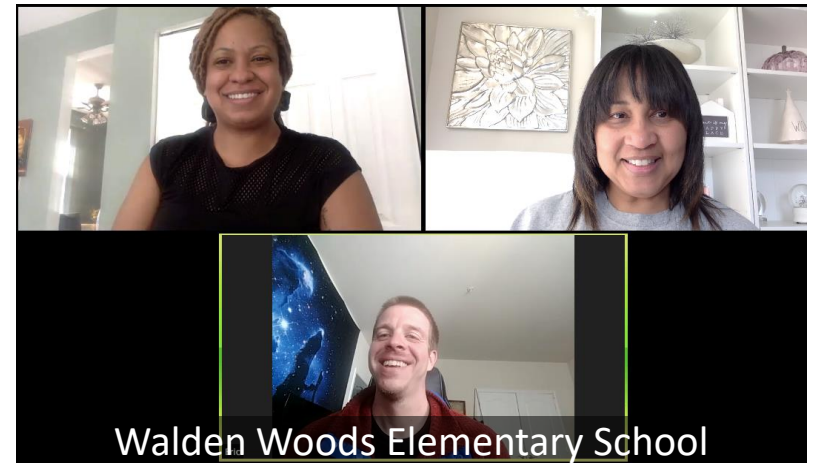
- ★ Community Meeting/Event (3)
- ★ Project Closeout Event (2)
- ★ Outreach Materials Distribution (6)
- ★ Project Groundbreaking Event (1)
- ★ General Outreach (2)
- ★ 2019 Event (10)
- Municipal Boundary
- Non-County MS4 Regulated Area



COMMUNITY ENGAGEMENT DISTRICT 9



School House Pond Maintenance Transfer



Walden Woods Elementary School



Simmons Acres

CWP SCHOOLS PROGRAM DISTRICT 9



CWP School



Municipal
Boundary

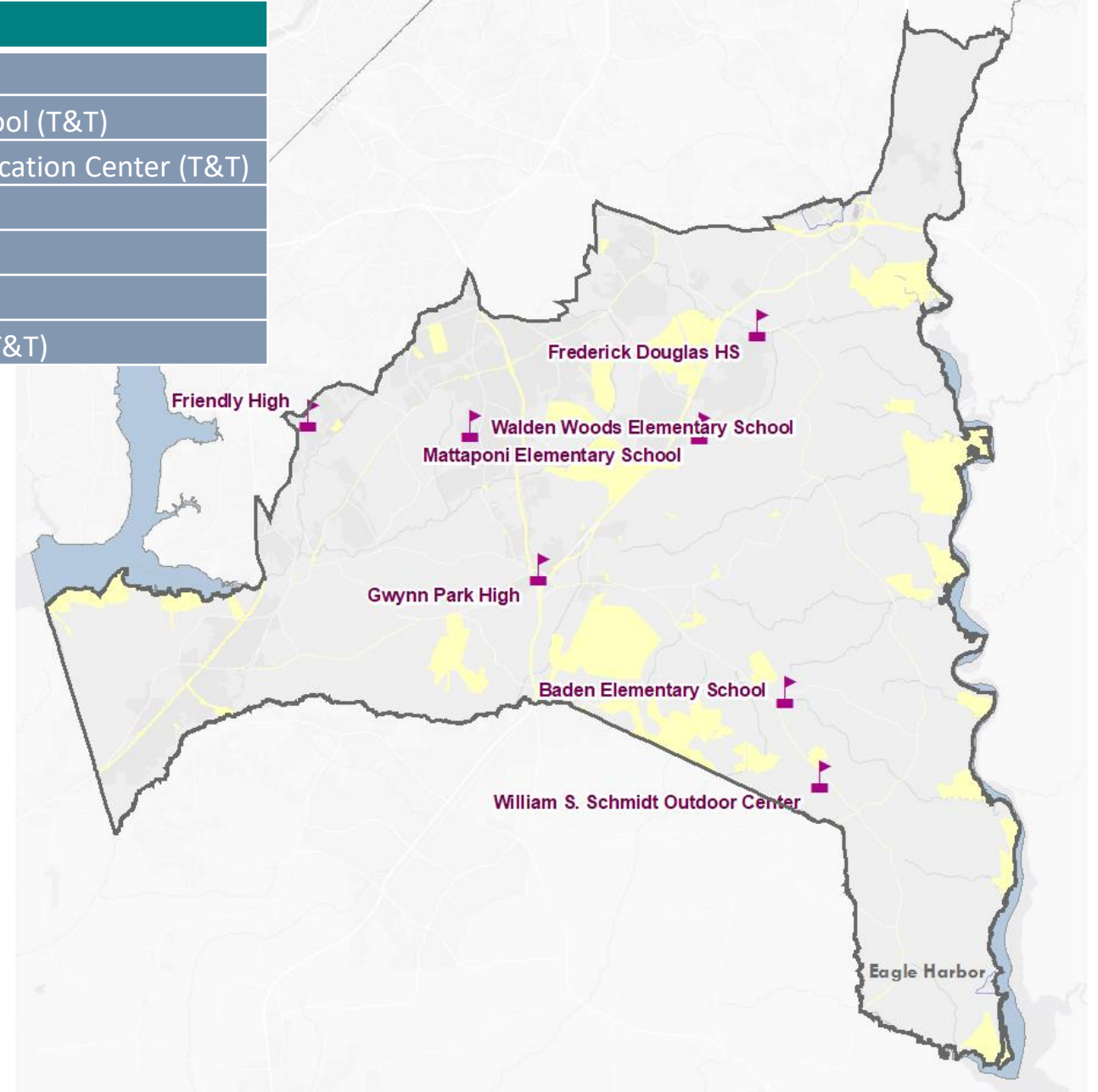


Non-County MS4
Regulated Area

Note: T&T = Treating &
Teaching Program Participant

Schools

Baden Elementary School
Walden Woods Elementary School (T&T)
William S. Schmidt Outdoor Education Center (T&T)
Frederick Douglass High School
Friendly High School (T&T)
Gwynn Park High School (T&T)
Mattaponi Elementary School (T&T)



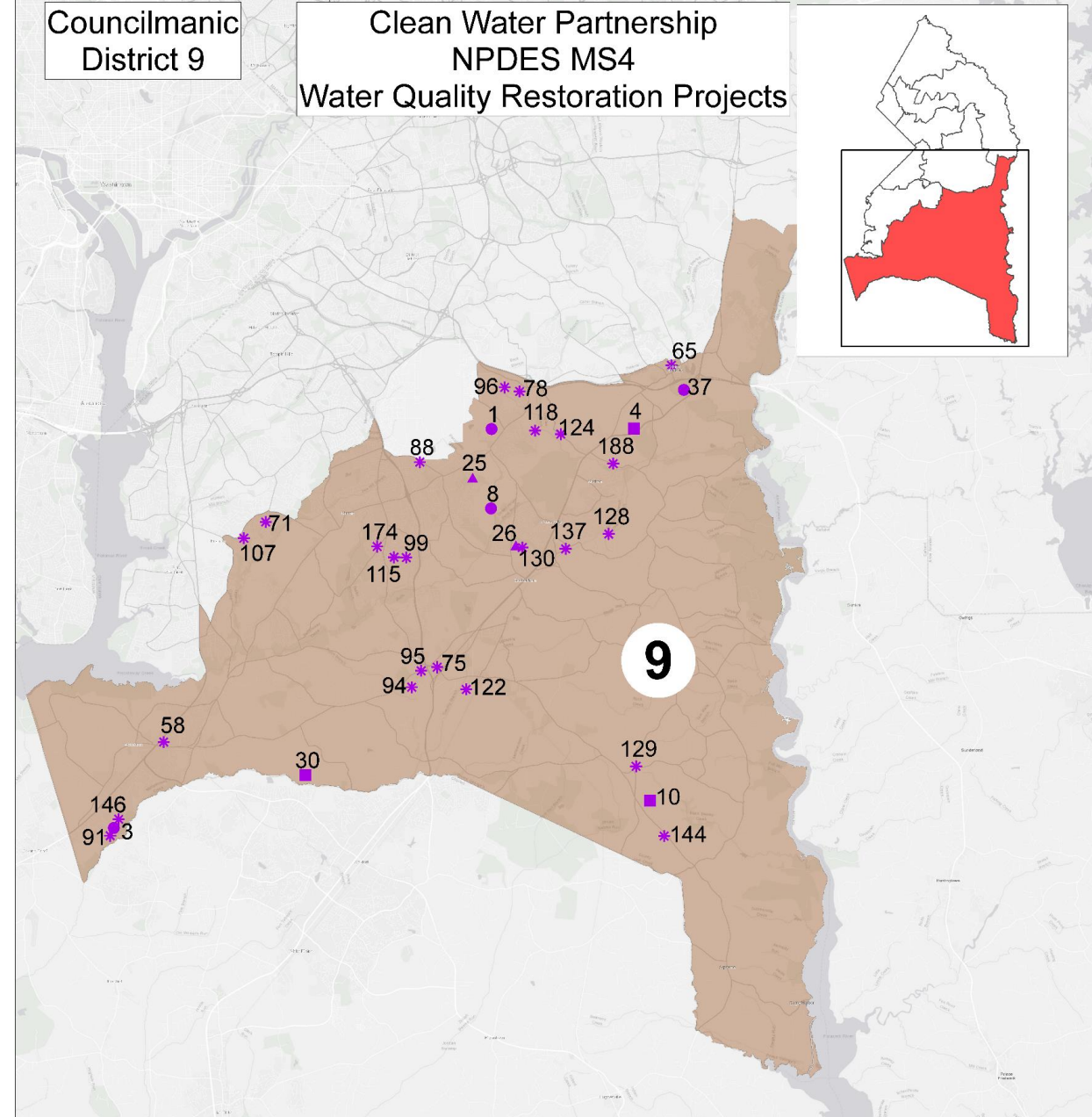
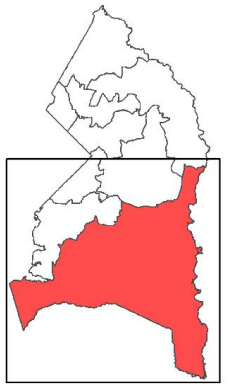
CWP PROJECTS IN DISTRICT 9

- Design
- ▲ Planning
- * Completed
- Construction

Project Name	Map ID	Project Name	Map ID
Accokeek Branch Library	58	Mattaponi ES	137
Baden ES	129	Melwood Springs #3	118
Belmont Crest #2	96	MES Stream Restoration	8
Belmont Crest #3	78	Piscataway Park	25
Black Swamp Creek	10	Proctor Commercial	88
Carroll at Maryvale	124	Schoolhouse Pond	65
Cheltenham Woods	130	Sherwood Forest	1
Cheltenham Woods Park	26	Simmons Acres	3
Crain Highway	4	Simmons Acres Phase II	146
Early Haven	122	Simmons Acres Pond #2	91
Equestrian Center	37	Simmons Ridge	99
Frederick Douglas HS	188	Simmons Ridge 100	115
Friendly High	107	Steed's Grant - Pond # 1	71
Gwynn Park High	75	Tributary to Mattawoman Creek	30
Lakeview Brandywine HOA	94	Walden Woods ES	174
Lakeview Brandywine HOA	95	William S. Schmidt Center	144
Marlton	128		

Councilmanic
District 9

Clean Water Partnership
NPDES MS4
Water Quality Restoration Projects





LEARN MORE

CONNECT WITH CLEAN WATER PARTNERSHIP



[@PGCCWP](#)



[@pgccleanwater](#)



[@PGCCWP](#)



[Look for our channel: The Clean Water Partnership](#)



Angela D. Alsobrooks
County Executive

