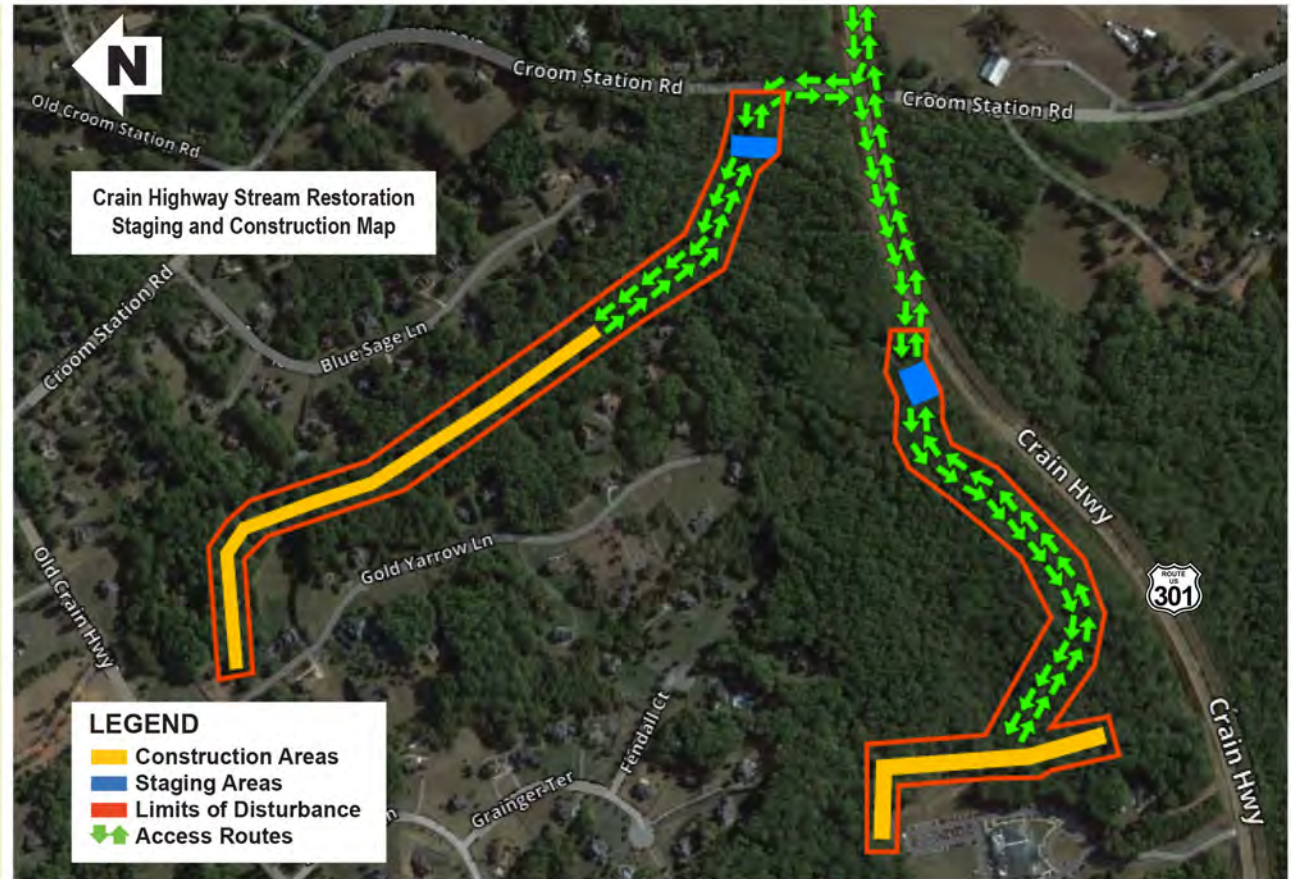


PRINCE GEORGE'S COUNTY IN ALLIANCE WITH THE CLEAN WATER PARTNERSHIP (CWP) HAS BEEN WORKING ON THE PLANNING AND DESIGN OF A STREAM RESTORATION PROJECT NEAR CROOM STATION RD. & MD-301 / CRAIN HIGHWAY SOUTHBOUND . THE CONSTRUCTION FOR THIS PROJECT IS SCHEDULED TO START IN SUMMER 2020.

PROJECT DETAILS:

This is a restoration project to improve the condition of the affected streams. Stream restoration is a best management practice (BMP) that stabilizes eroded streams, restores natural aquatic ecosystems and improves water quality. The project includes installation of several stream structures, construction of natural riffle-pool sequences, grading to restore stream meanders, reconnecting the stream to the floodplain, and enhancement of existing palustrine forested (PFO) wetlands on-site. After construction is complete, all disturbed areas will be returned to stable conditions.



PROJECT ADDRESS: Croom Station Rd. & MD-301 / Crain Highway southbound

CONTRACTOR: HGS, LLC - Managed by RES

CONSTRUCTION START: Summer 2020

CONSTRUCTION FINISH: Spring 2021 (weather permitting)

CONSTRUCTION HOURS (TYPICAL):

Monday – Friday: 7:00 am – 4:00 pm
Saturday (as needed): 9:00 am – 4:00 pm

SITE ACCESS: Construction crews will access the site via a temporary entrance off of Croom Station Rd. & MD-301 / Crain Highway southbound. There will be approximately 1 - 5 trucks each week delivering materials to the site.

CONSTRUCTION PARKING: Construction crews will stage equipment and park crew member vehicles on-site, within the Limits of Disturbance (LOD). The LOD is the boundary within which all construction, materials storage, grading, landscaping and related activities will occur.

TREE REMOVAL: Construction crews will remove several trees to make room for the stream restoration. Crews will plant new trees at the end of construction to replace trees that were removed.

The Clean Water Partnership (CWP) is a Public-Private Partnership (P3) between Prince George's County and Corvias. The CWP is the first of its kind to design, build, finance, operate and maintain urban stormwater infrastructure to meet MS4 regulatory requirements and is committed to retrofit up to 4,000 impervious acres.



ANGELA D. ALSOBROOKS
COUNTY EXECUTIVE



Please visit thecleanwaterpartnership.com to learn more about this innovative partnership.

If you have any questions please email Kristina.Bigby@thecleanwaterpartnership.com or call Ms. Bigby at 202-255-6530.

Clean Water Partnership
9475 Lottsford Road, Suite 100
Largo, MD 20774



CLEAN WATER PARTNERSHIP

CRAIN HIGHWAY STREAM RESTORATION PROJECT

CONSTRUCTION INFORMATION

