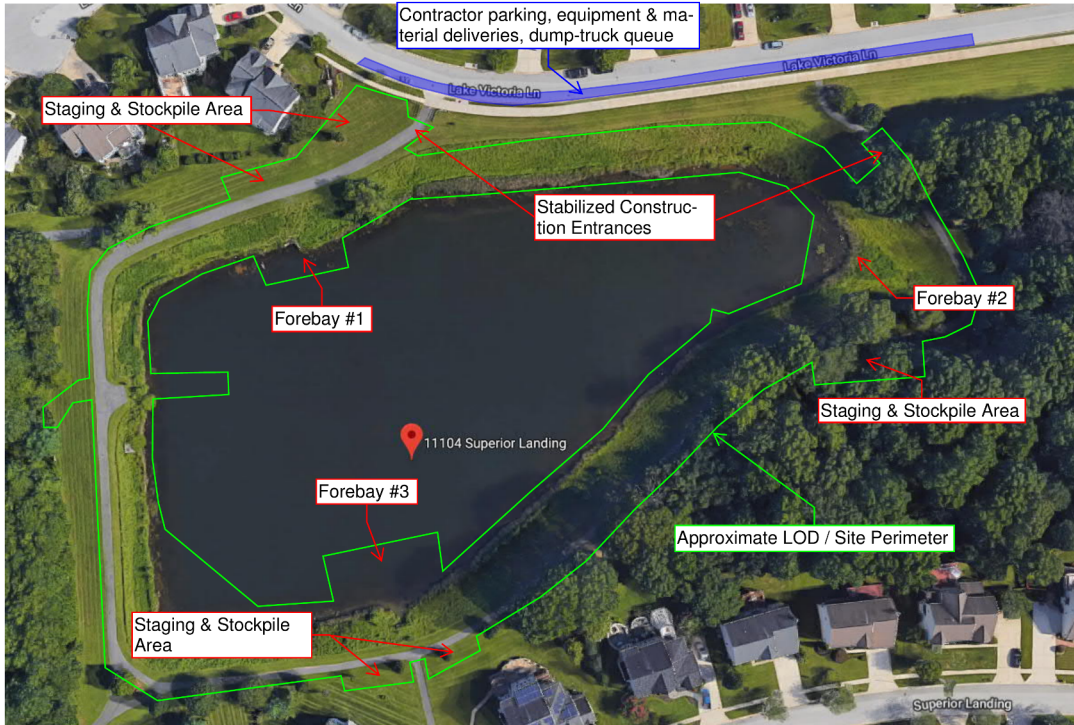


CONSTRUCTION INFORMATION



Lakeview Pond
Staging Plan
11104 Superior Landing
Bowie, MD 20720

PROJECT ADDRESS: 11104 Superior Landing, Bowie, MD

CONTRACTOR: Sitework - Rapp Contracting, Inc.
Landscaping - E&F Landscaping, LLC

CONSTRUCTION START: December 2019

CONSTRUCTION FINISH: Late Feb/early Mar (Construction), late Mar/early Apr (Landscaping)

CONSTRUCTION HOURS (TYPICAL):

7:00 AM - 4:00 PM Monday - Friday
Weekend work as needed due to schedule/weather.

SITE ACCESS: Via asphalt pathways from Lake Victoria Ln. Contractor vehicle parking and unloading equipment/materials on Lake Victoria Ln. All other staging will be on-site within the LOD.

PROJECT DETAILS: The project will enhance an existing stormwater management pond by adding three forebays for the inflows. The wet pond enhancement is part of Prince George's County and the Department of the Environment's National Pollutant Discharge Elimination System and will treat ~24.75AC of impervious area. Work includes gabion forebay walls, riprap inflows, grading pond slopes, and planting various ornamental grasses/perennials/groundcovers.

If you have any questions please contact:
nnamdi.amaechi@thecleanwaterpartnership.com or
(301) 861-0447.

