

The background of the entire page is a photograph of a construction site, featuring a large excavator with a bucket. The image is overlaid with a semi-transparent green filter. Two dark green rectangular boxes are superimposed on the image, containing white text.

CLEAN WATER PARTNERSHIP FLETCHER'S FIELD PARK STREAM RESTORATION

5200 KENILWORTH AVE., RIVERDALE, MD

CONSTRUCTION INFORMATION

Clean Water Partnership
9475 Lottsford Road, Suite 100
Largo, MD 20774

Affix
stamp
here

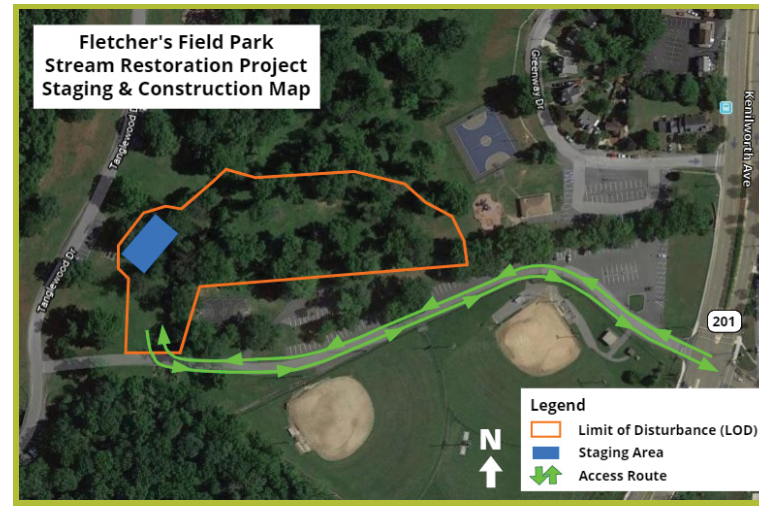
CLEAN WATER PARTNERSHIP FLETCHER'S FIELD PARK STREAM RESTORATION

The Clean Water Partnership (CWP) is a Public-Private Partnership (P3) between Prince George's County and Corvias. The CWP is the first of its kind to design, build, finance, operate, and maintain urban stormwater infrastructure to meet Municipal Separate Storm Sewer System (MS4) regulatory requirements and is committed to retrofit up to 4,000 impervious acres.

PROJECT DETAILS

This is a restoration project to improve the condition of the affected stream. Stream restoration is a best management practice (BMP) that stabilizes eroded streams, restores natural aquatic ecosystems, and improves water quality. The project includes the installation of several stream structures, including rock cross vane, riffle pool, and large pool designs, to enable natural control of stream erosion. After construction is complete, all disturbed areas will be returned to stable conditions. For more information, please see below or contact CWP Outreach Representative, Patrick Smith, via email at patrick.smith@thecleanwaterpartnership.com.

Contractor	D&F Construction
Construction Start	August 2020
Construction Finish	Spring 2021 (weather permitting)
Construction Hours	Monday – Friday: 7 AM – 5 PM Saturday (as needed): 7 AM – 5 PM
Site Access	Construction crew members will access the site via the Fletcher's Field Park access road off Kenilworth Ave. See the following map for details.
Pedestrian Access	Pedestrian access should not be affected. See Park and Planning guidelines for park usage.
Construction Staging & Parking	Construction crews will stage equipment within the Limit of Disturbance (LOD). The LOD is the boundary within which all construction and related activities will occur. Construction crew members will park in the Fletcher's Field Park parking lot.
Tree Removal	Construction crews will remove some trees to make room for the stream restoration. At the end of construction, crews will plant new trees as a mitigation effort.



Please visit TheCleanWaterPartnership.com to learn more about this innovative partnership.